



# COMMUNITY INFORMATION MEETING

# NEW BRONCOS STADIUM

## BURNHAM YARD

RONNY RONNY RONNY RONNY RONNY RONNY  
STUDIO STUDIO STUDIO STUDIO STUDIO STUDIO



**BOYS & GIRLS CLUBS**

---

**DENVER BRONCOS**



# TONIGHT'S AGENDA

## 1. Welcome

Allie Engelken - Denver Broncos

## 2. Broncos Vision

Damani Leech – Denver Broncos

## 3. City Process

Stephen Wilson – Community Planning + Development

## 4. Burnham Yard Vision & Planning

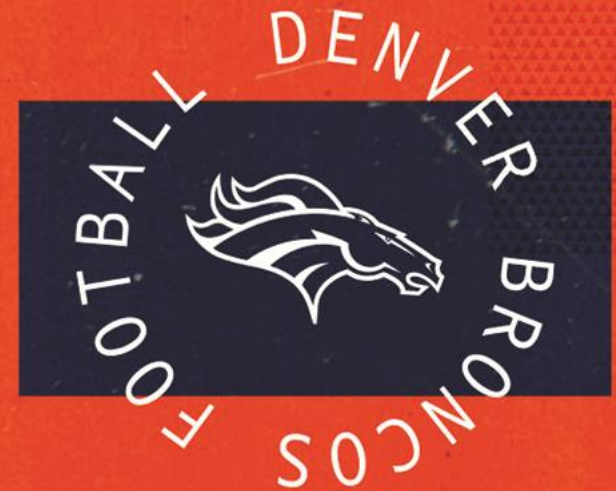
Cindi Marsiglio – Denver Broncos

Joshua Brooks – Sasaki (Broncos Consultant)

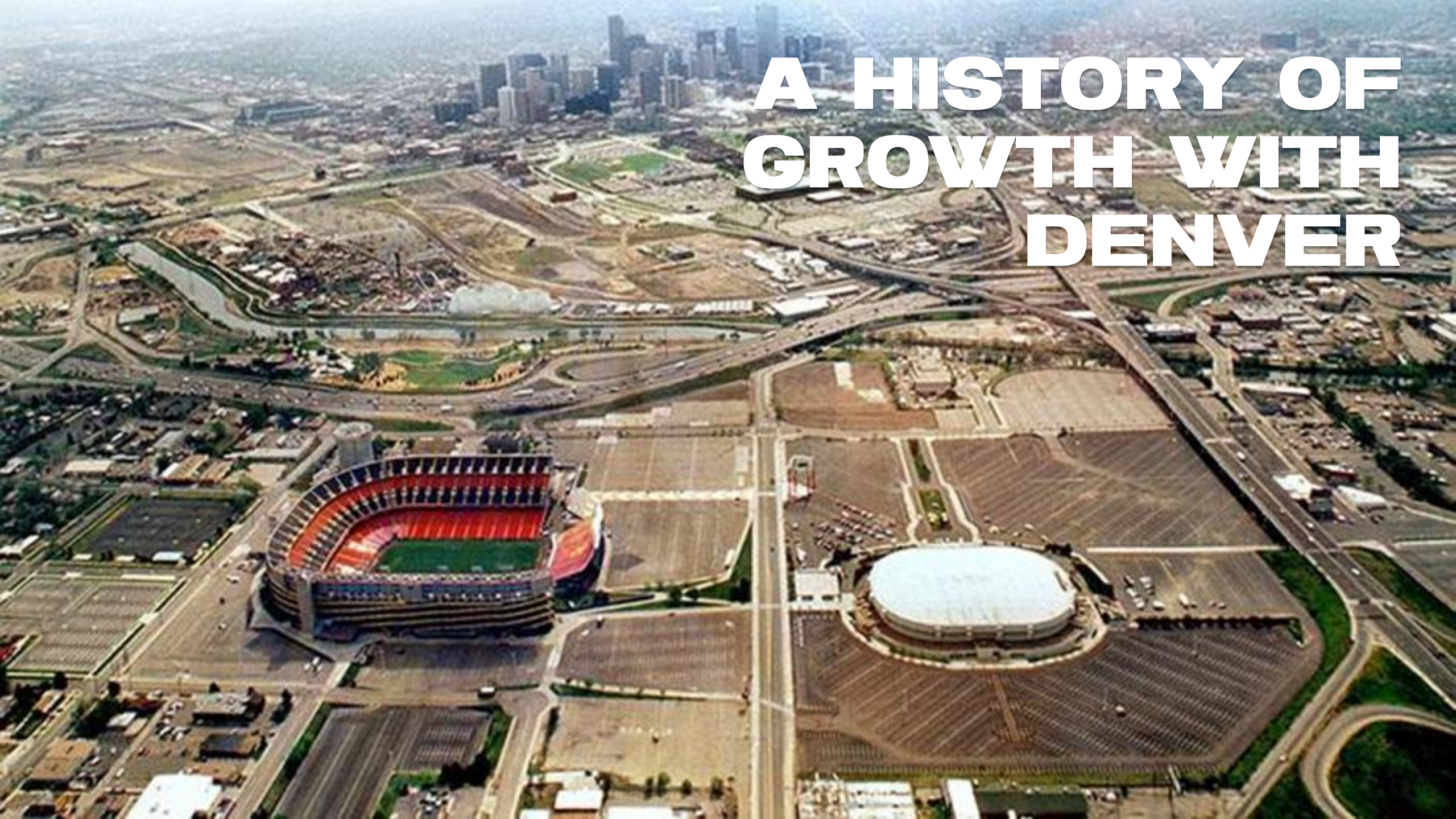
## 5. Interactive Community Polling

Allie Engelken – Denver Broncos

Andy Mountain – GBSM (Broncos Consultant)



# A HISTORY OF GROWTH WITH DENVER



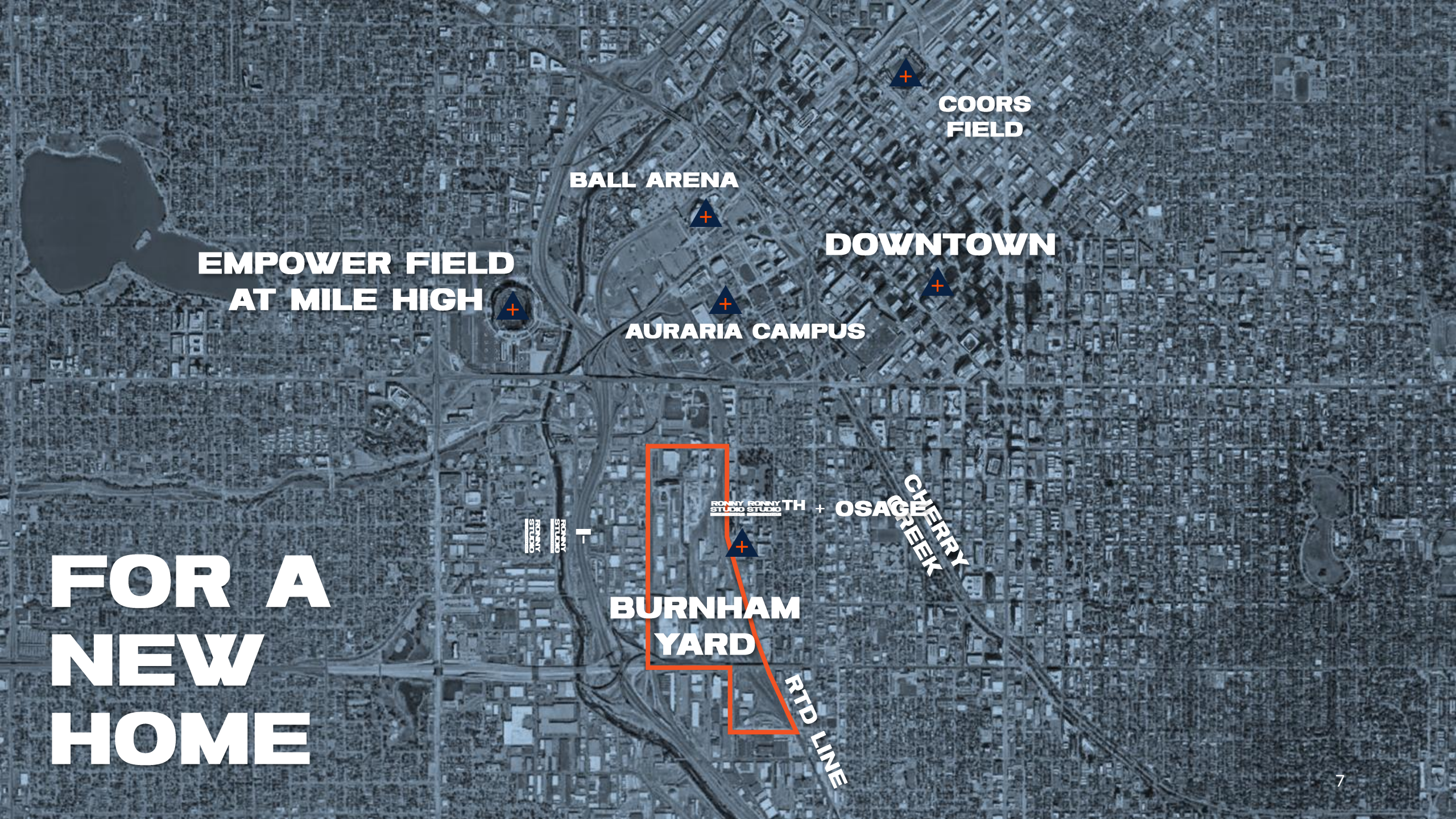
# A COMMUNITY ICON



# WE SEARCHED ACROSS THE REGION

  
+  
EXISTING MILE HIGH





**EMPOWER FIELD  
AT MILE HIGH**

**BALL ARENA**

**COORS  
FIELD**

**DOWNTOWN**

**AURARIA CAMPUS**

**BURNHAM  
YARD**

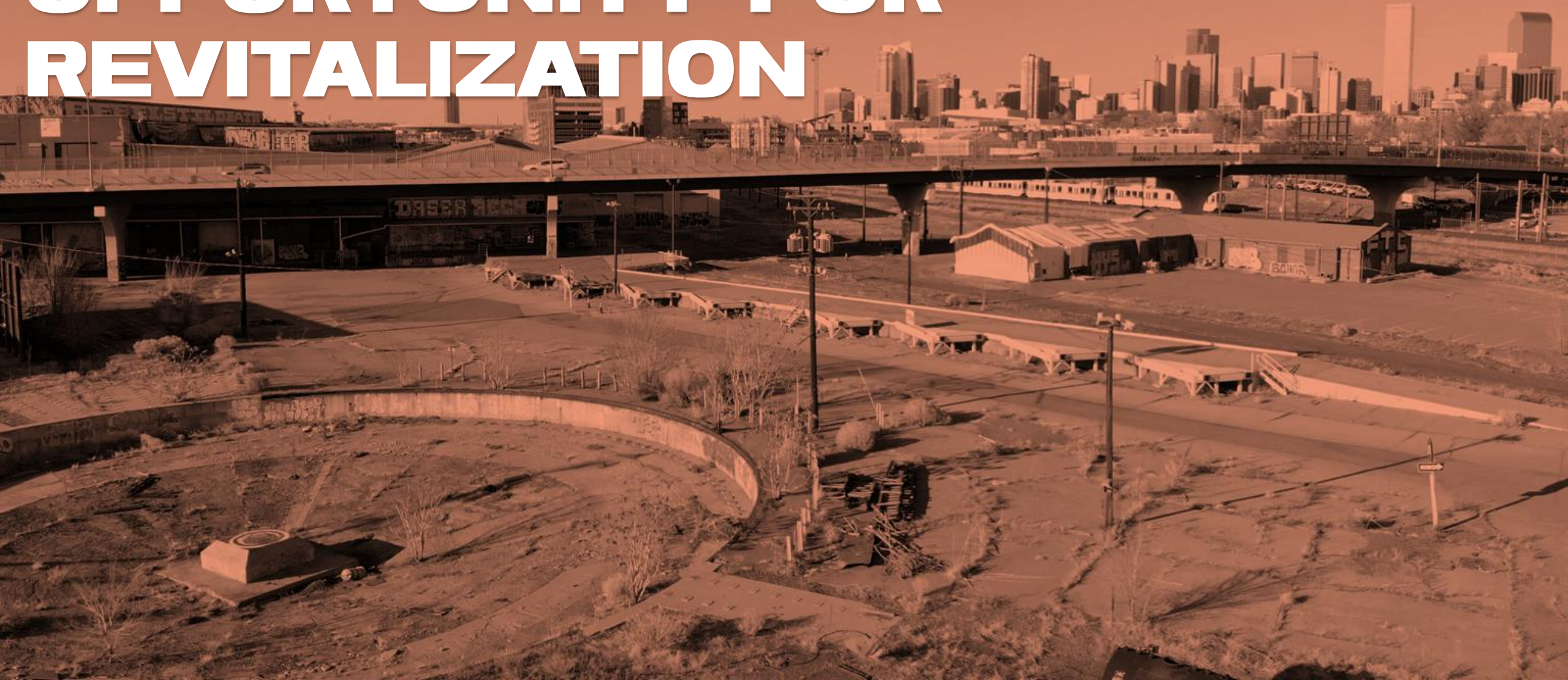
RONNY RONNY TH + OSAGE  
STUDIO STUDIO

CHERRY  
CREEK

RTD LINE

**FOR A  
NEW  
HOME**

# A GENERATIONAL OPPORTUNITY FOR REVITALIZATION

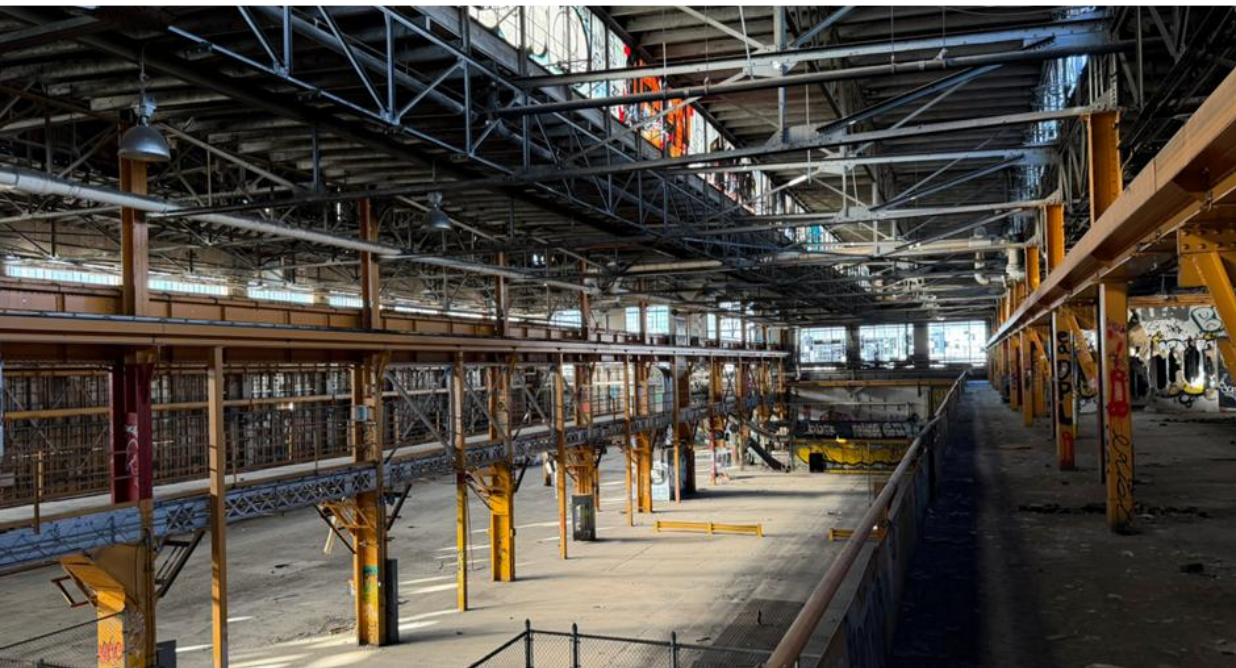


# A COMMUNITY WITH A STRONG IDENTITY



# A RICH HISTORY TO CELEBRATE





# TOWARDS A VISION

EXISTING LOCOMOTIVE SHOP



UNIQUE RETAIL  
EXPERIENCE



COMMUNITY  
GATHERING



ADAPTIVE  
REUSE





**A WORLD  
CLASS PLACE  
FOR FANS...**



**...A WORLD  
CLASS PLACE  
FOR PEOPLE.**

# CITY PROCESS



# City & County of Denver

Large Development Review Process

[Stephen.Wilson2@denvergov.org](mailto:Stephen.Wilson2@denvergov.org)

# Community Planning & Development (CPD)

Community Planning & Development is responsible for working with Denverites from all walks of life to **guide growth** and build community through safe and sustainable development.

## Our Work

At Community Planning and Development, we collaborate with Denver's residents to help guide the city's growth, enhancement and preservation. Our staff prepares visioning plans, land use regulations, and codes. We also review, permit, and inspect development across the city. This work is done to ensure the city's built environment is safe, sound and meets the community's needs.



### City Planning

Learn about Denver's vision for an inclusive, connected, healthy city, as well as neighborhood planning, implementation efforts, urban design and transit-oriented development.



### Plan Review, Permits, and Inspections

Start here to get complete information for all types of construction projects, including commercial and residential development.



### Welcome to E-permits

Access Denver's online permitting and licensing system, view tutorial videos and FAQs on how to submit applications, search for permit records and more.



### Building and Fire Codes

View Denver's Building and Fire Code, code policies and guides, and learn about work to keep codes current and in line with international standards.



### Denver Zoning Code

View the Denver Zoning Code, the Former Chapter 59 zoning code, and related zoning code interpretations, and learn about text amendments to the city's zoning code and rezonings.



### Contractor Licensing

Get information on contractor licensing and supervisor certificates for construction, trades, and right-of-way work in Denver.



### Landmark Preservation

Get information about design review for historic properties and learn about Denver's preservation program, including landmarks, designations under review, and resources for property owners.



### Boards and Commissions

Find information for the Denver Planning Board, Landmark Preservation Commission, appeal boards, design review boards, and more.



### Contact us

### Contact us

Make an appointment to visit in person, find phone and email contacts for divisions and staff, or make a public records request.

# Large Development Review

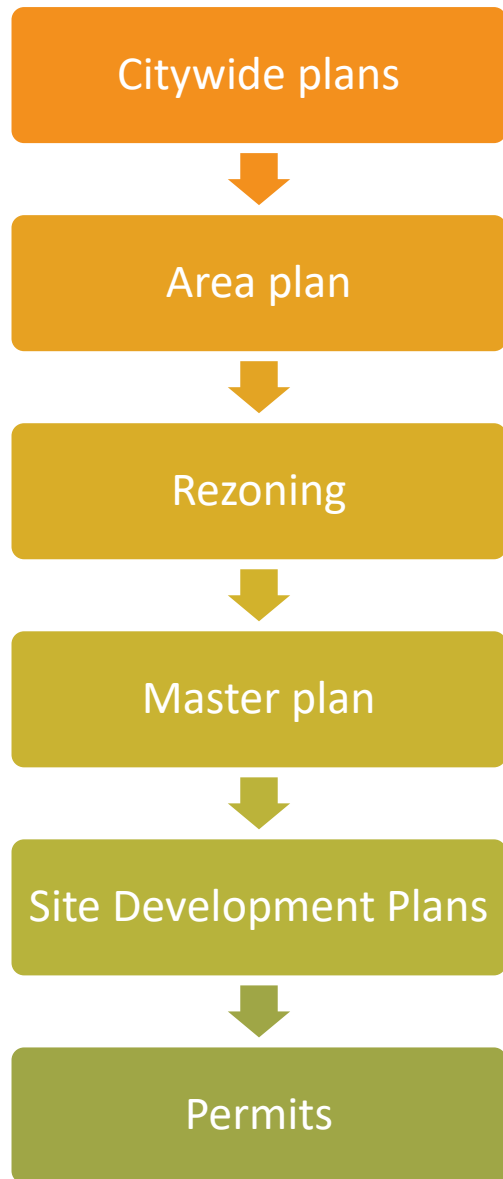
- Implements City Council adopted plans
- Provides an opportunity to identify issues early in the process
- Provides information to the community
- Creates a framework for coordinated development



# Small Area Plan

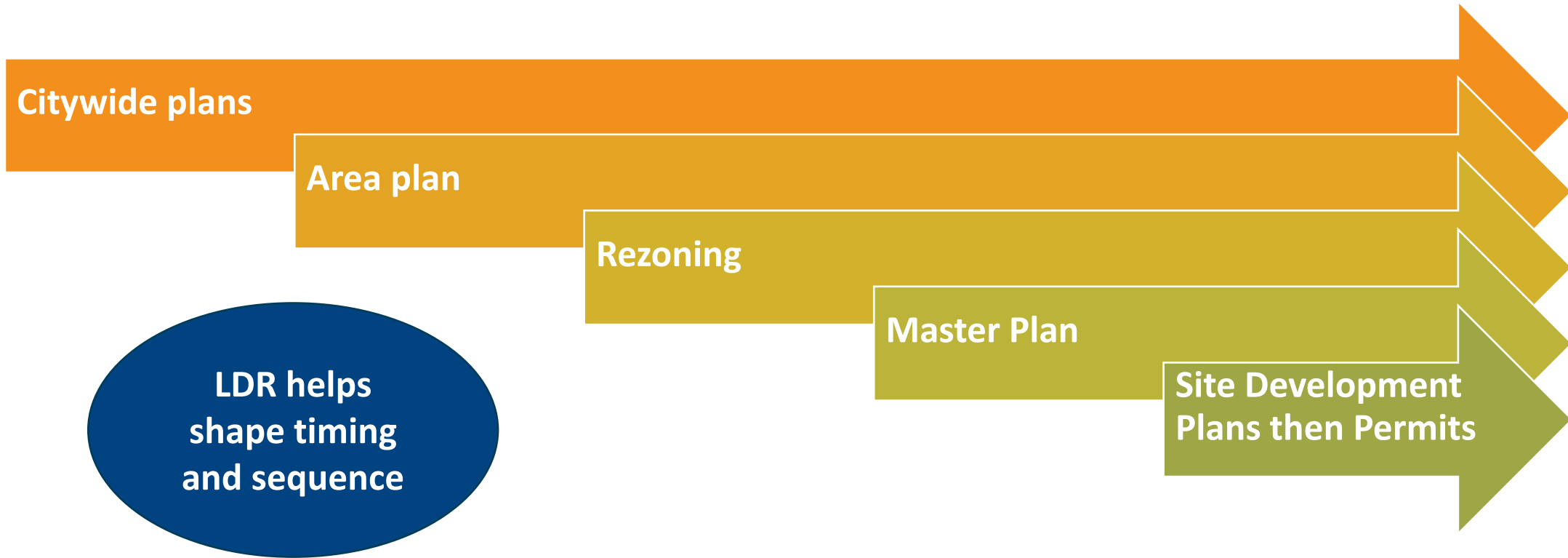
- Brings communities together to identify a vision for an area and provide recommendations on how to achieve that vision.
- Provides a level of analysis, detail, and guidance on issues affecting local areas that citywide plans cannot. They help implement citywide plans at a local level.





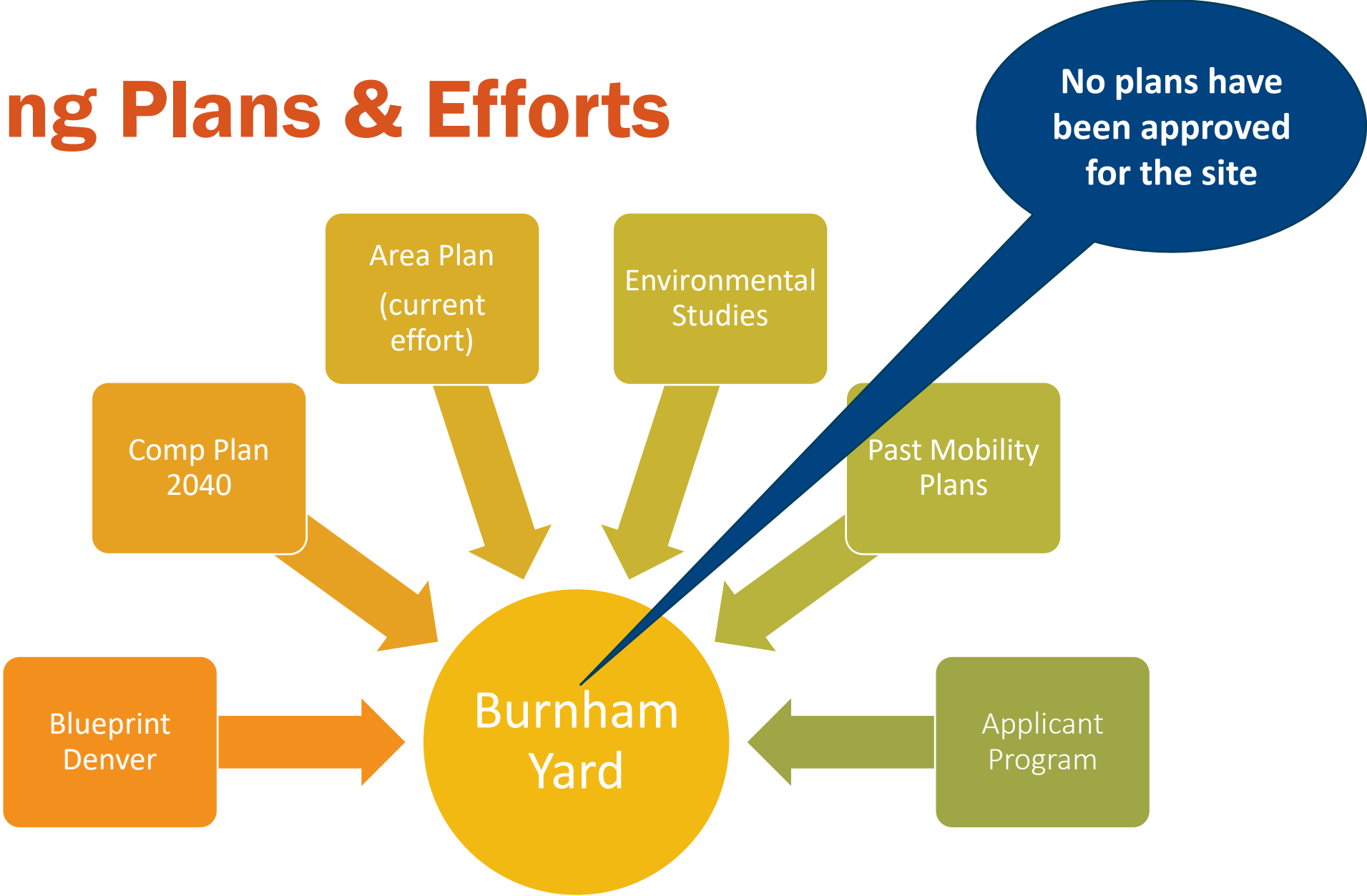
# Planning and development ideally moves from:

- broad → specific
- citywide → individual sites



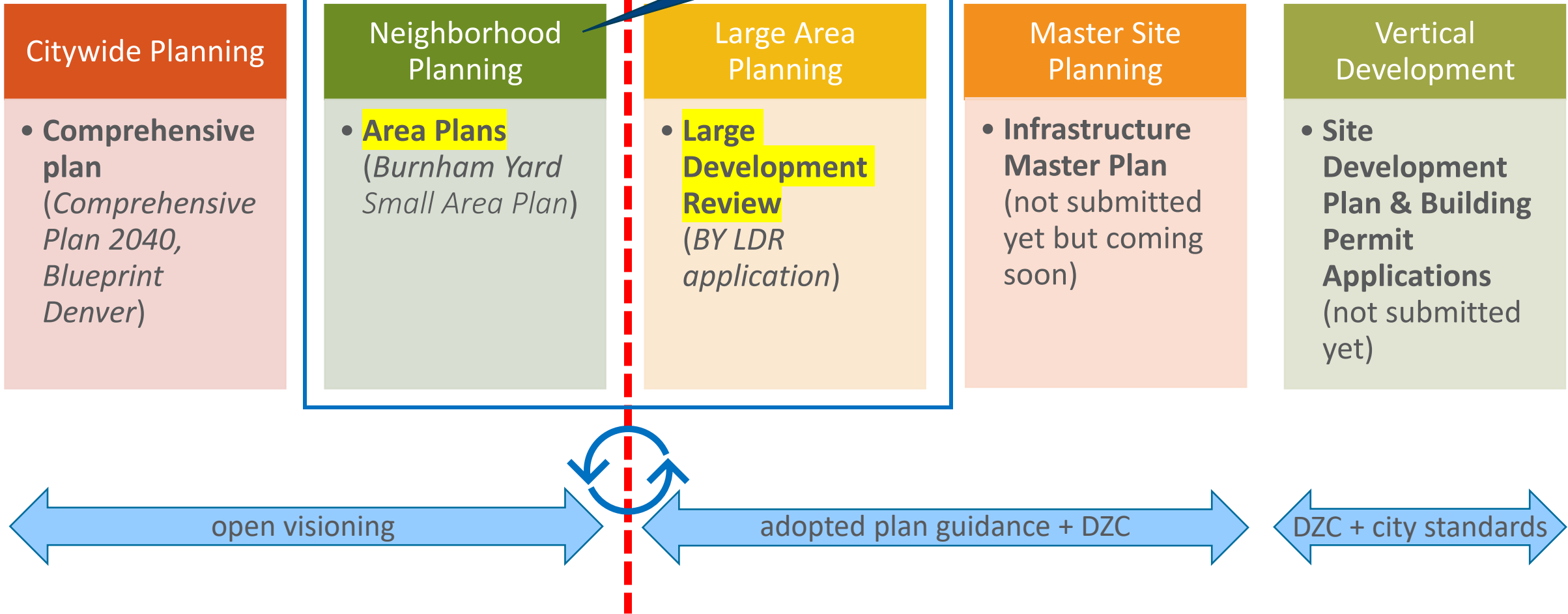
Often, planning and development occur with overlapping processes

# Existing Plans & Efforts



# Guiding Growth

Sometimes LDR prompts the need for an area plan (e.g. Loretto Heights)



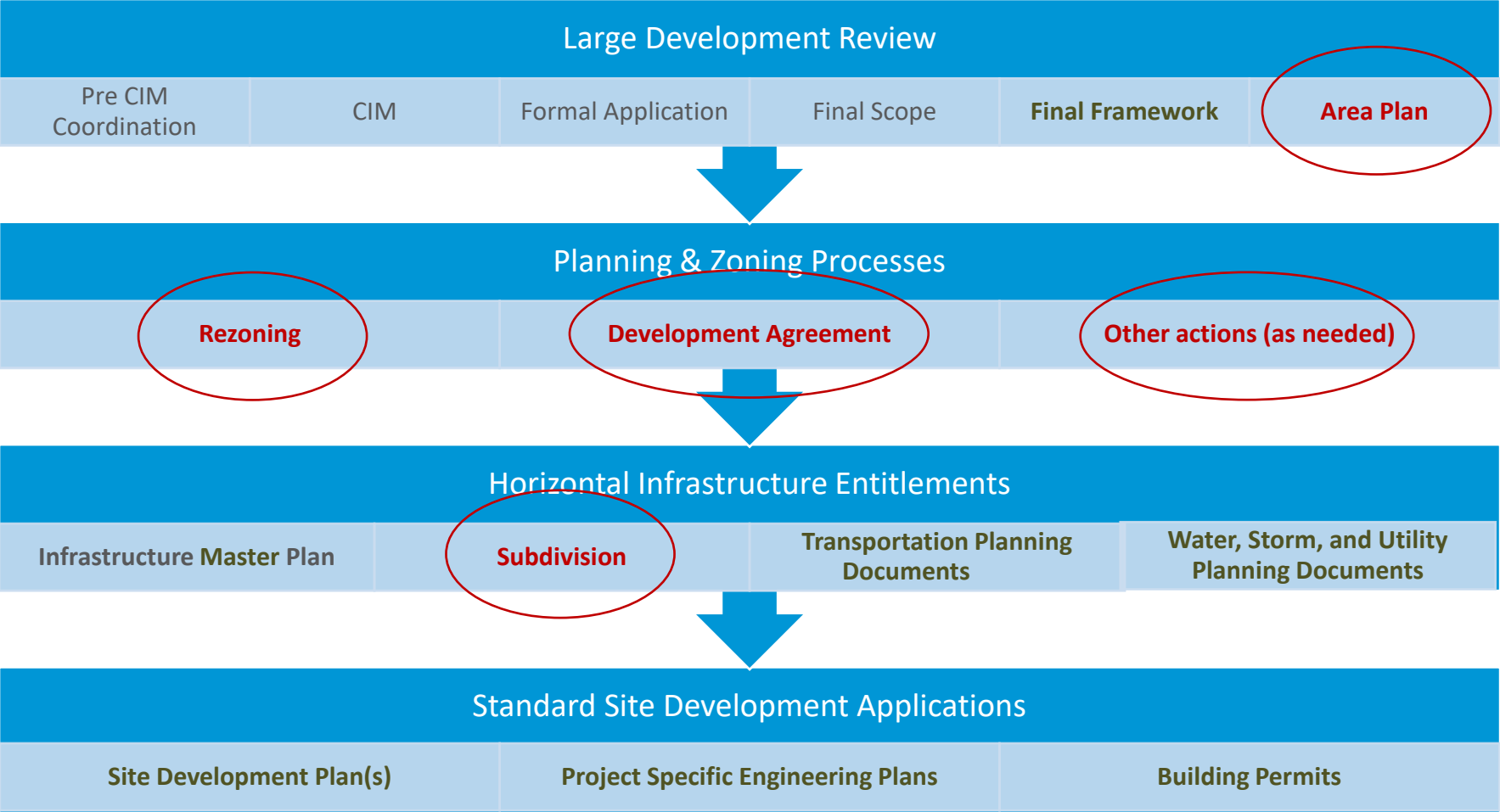
# Difference between SAP and LDR



**Small Area Plans (SAP)** are policy documents that guide future development decisions in specific geographic areas. Plans are developed in partnership between the city and community and become adopted by City Council. They identify the community's priorities on important topics like land use, mobility, quality-of-life, and public space.

**Large Development Review (LDR)** is a coordinated site planning process between a developer and the city for large developments. LDR provides clear direction on how projects are expected to meet Denver's priorities and follow established review processes.

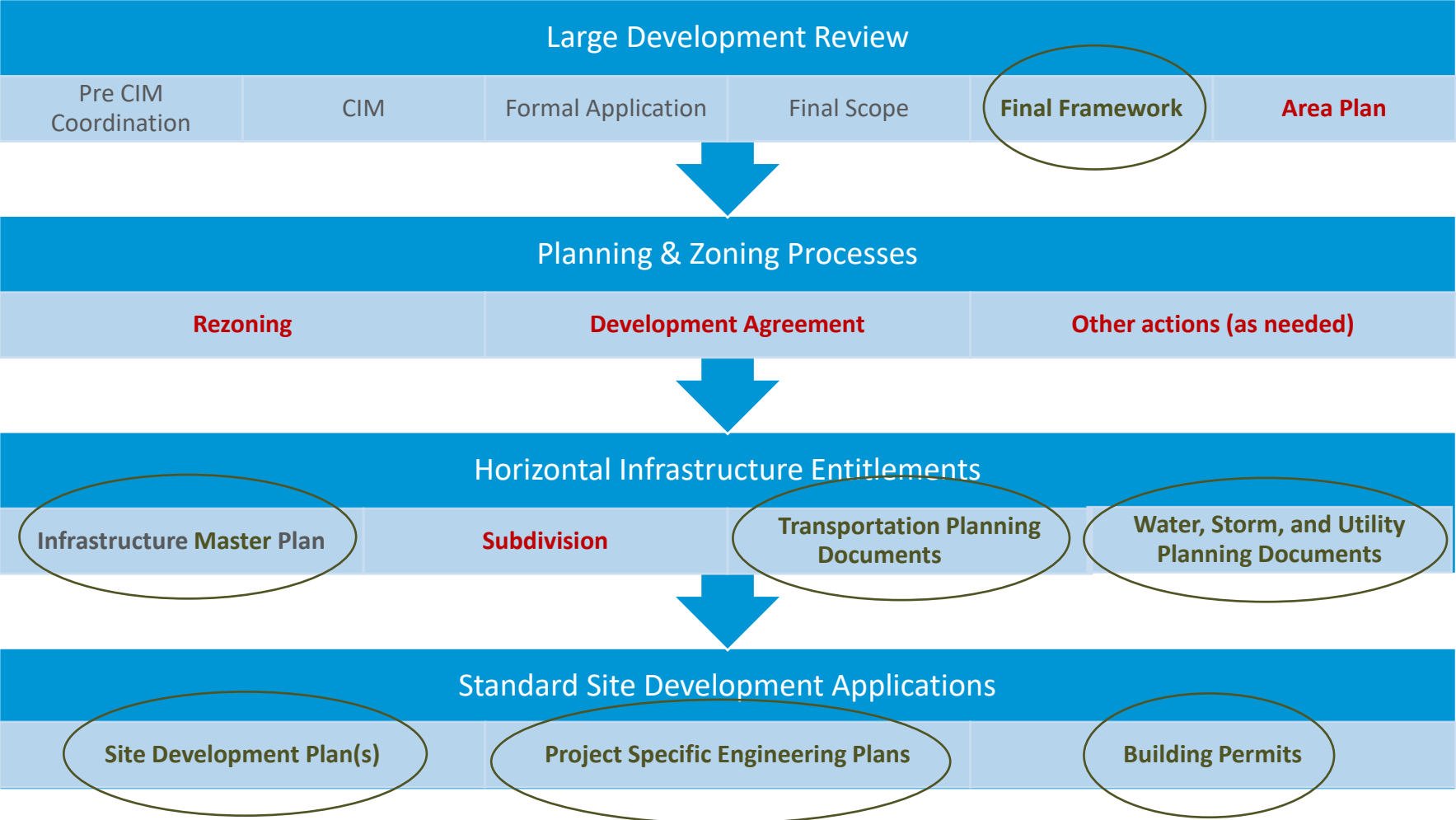
# Guiding Growth



**\*City Council Decision**

**\*Administrative Decision**

# Guiding Growth

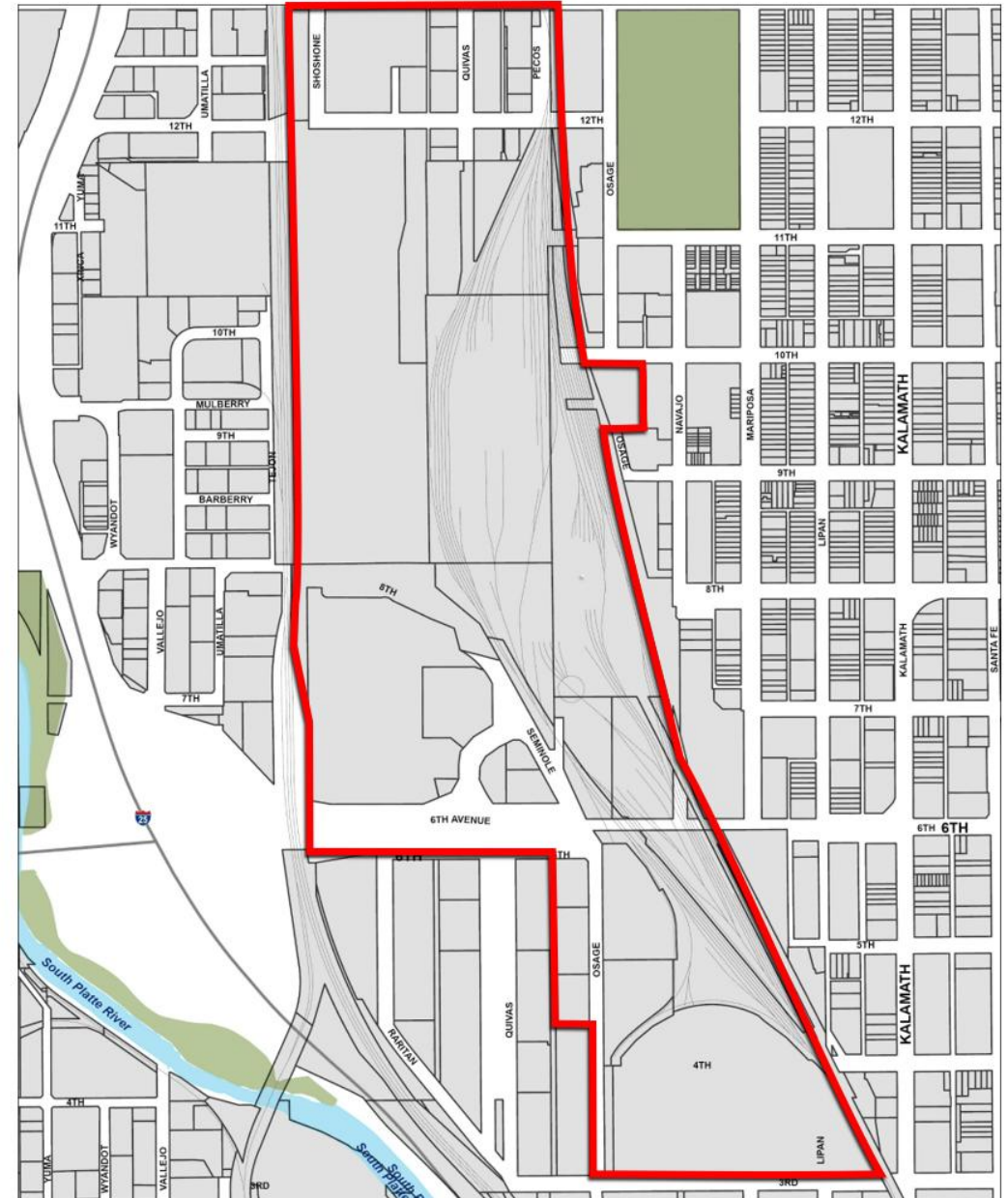


**\*City Council Decision**

**\*Administrative Decision**

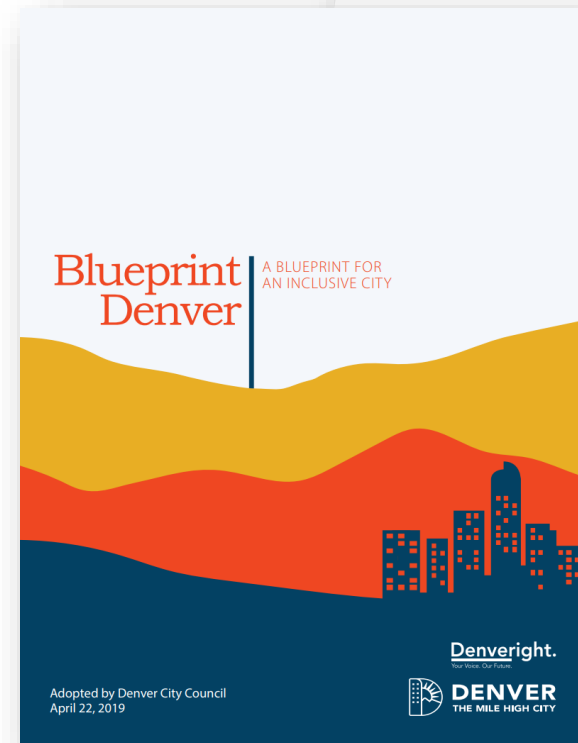
# Site

- ~150 acres
- Some properties may not be included in the final Framework
- Ex. Zoning: Industrial, Industrial Mixed-Use
- Proposed Zoning: TBD
- Stadium and surface parking are currently allowed by the existing zoning.



# Citywide Plans

- Blueprint Denver 2019
- Comprehensive Plan 2040
- Denver Moves
- Game Plan for a Healthy City



# Plan Guidance – Blueprint Denver

## Complete Neighborhoods and Networks

*Blueprint Denver's* vision and goals are realized through the planning and implementation of complete neighborhoods connected by a complete multimodal transportation network.

### Complete Networks

Denver will have a complete multimodal transportation network across the city to provide more choices to get to our jobs, schools, homes and leisure activities.

#### Elements of a Complete Network

##### Pedestrian Network

All streets are designed to prioritize people walking, including those using mobility devices. Certain streets can be further enhanced to create vibrant public spaces.

##### Bicycle Network

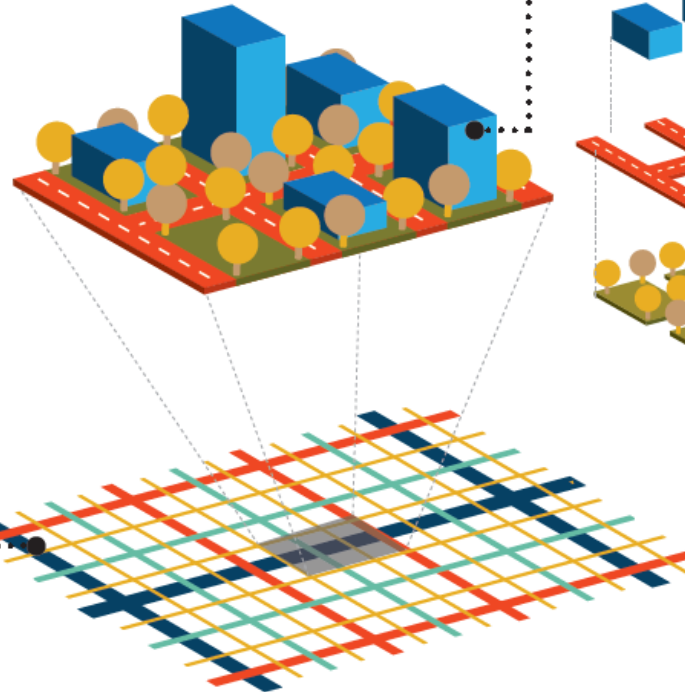
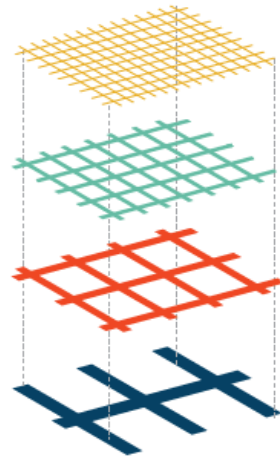
Bicycle priority streets prioritize comfort and convenience for people biking.

##### Transit Network

Transit priority streets create a complete local transit network that complements the regional rail network.

##### Auto and Goods Movement

The network that promotes efficient auto and goods movement. Vehicle technology and how goods are delivered and received are rapidly changing.



### Complete Neighborhoods

Denver will be composed of complete neighborhoods accessible to everyone, regardless of age, ability or income.

#### Elements of a Complete Neighborhood



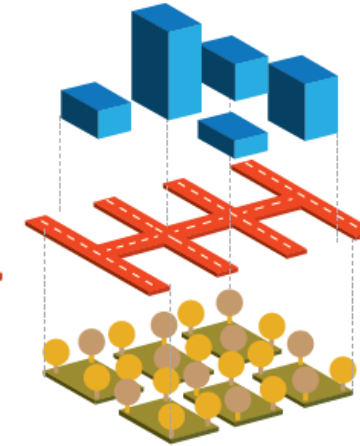
Enhance the character and quality of neighborhoods.



Connect people to the neighborhood places where they live, work and play.



Provide neighborhoods with parks, trees, natural features, recreation opportunities and civic and social spaces.



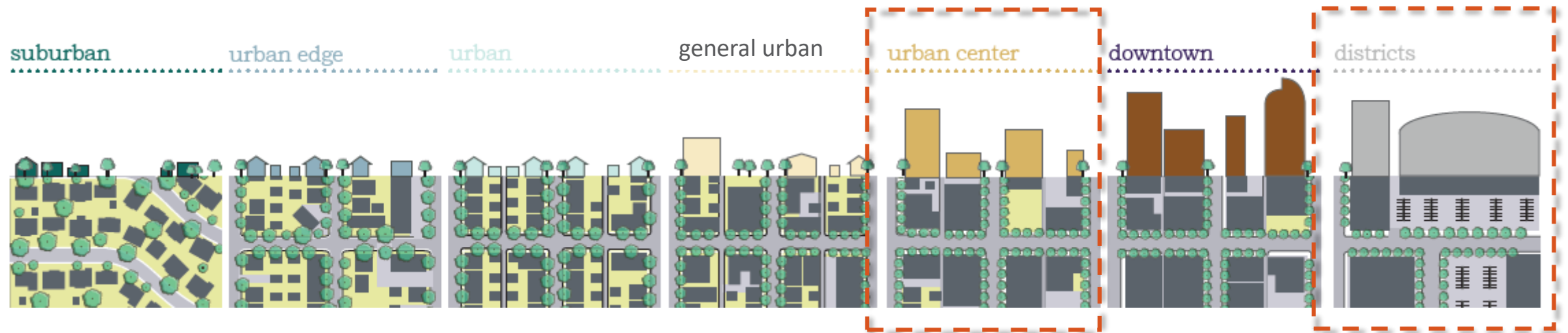
# Plan Guidance – Blueprint Denver

- **Future Place Types:** Community Center, Innovation Flex, Value Manufacturing
- **Neighborhood Context:** Urban Center and Districts (innovation flex)



**CENTERS**

Centers are mixed-use places of different scales. People often go to centers to engage in social, dining, and cultural events.

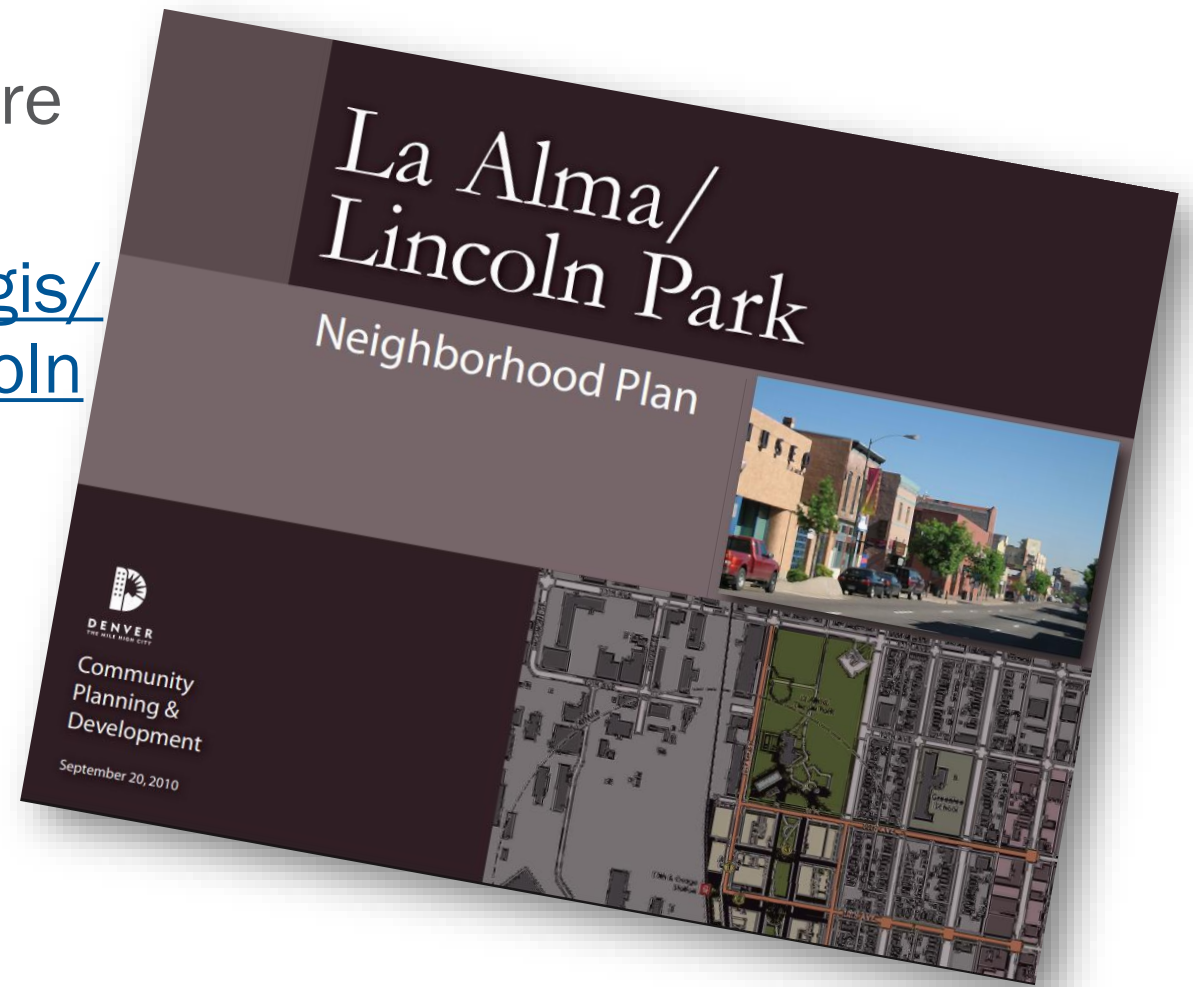


# Area Plans

La Alma Lincoln Park → calls for more planning in BY area

[https://www.denvergov.org/media/gis/WebDocs/CPD/Plans/La\\_alma\\_lincoln\\_park\\_neighborhood\\_plan.pdf](https://www.denvergov.org/media/gis/WebDocs/CPD/Plans/La_alma_lincoln_park_neighborhood_plan.pdf)

Baker Neighborhood Plan



# EQUITY ANALYSIS

## Blueprint Denver Contains Three Major Equity Concepts

- Integrating these concepts into planning and implementation will help to create a more equitable Denver.



# EQUITY ANALYSIS (in context of Blueprint Denver)

## What is Equity?

- Equity is when everyone, regardless of who they are or where they come from, has the opportunity to thrive.
- Where there is equity, a person's identity does not determine their outcome.
- As a city, we advance equity by serving individuals, families, and communities in a manner that reduces or eliminates persistent institutional biases and barriers based on race, ability, gender identity and sexual orientation, age and other factors.

**Note: the Community Advisory Committee is working on their own equity statement**



# EQUITY ANALYSIS

## Moving Forward

- Equity will be considered at every step, including a full equity analysis
- The small area plan will play an important role in providing finer grained equity guidance for the study area



# Preliminary LDR Findings Overview:

- **Rezoning** is encouraged to set-up the area for mixed-use and residential development.
- Providing **housing options** is a city priority and Expanding Housing Affordability is applicable.
- **Open space** opportunities can create meaningful connections, and 10% open space is required.
- **Mobility improvements** are anticipated. With multiple stakeholders, coordination will be a significant effort.
- **Sustainability** through building electrification and water recovery are encouraged.

# BURHAM YARD VISION + PLANNING



# WHAT WE'VE DISCUSSED + WHAT WE HAVE HEARD

## Major Themes from First Small Area Plan Meeting

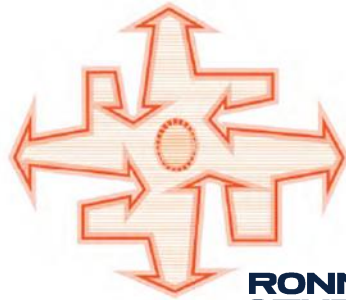
- Housing/Affordability
- Traffic & Parking
- Light Rail Crossings & Capacity
- Gameday Impacts on Neighborhood
- Protecting Views & History
- Small Business Impacts
- Daily Life Amenities
- Neighborhood Safety
- Open Space/Public Realm



# SIX GUIDING PRINCIPLES

## Your Voice in Action!

**01**  
ESTABLISHING COMMUNITY INTEGRATION THROUGH DEEP CONNECTIONS



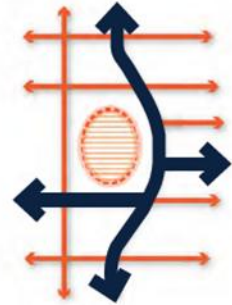
**RONNY RONNY**  
**STUDIO STUDIO**  
[www.ronny-studio.com](http://www.ronny-studio.com) [www.ronny-studio.com](http://www.ronny-studio.com)

**02**  
A COMMITMENT TO THE NEXT GENERATION



**RONNY RONNY**  
**STUDIO STUDIO**  
[www.ronny-studio.com](http://www.ronny-studio.com) [www.ronny-studio.com](http://www.ronny-studio.com)

**03**  
A COMPLETE, YEAR-ROUND COMMUNITY FOCUS



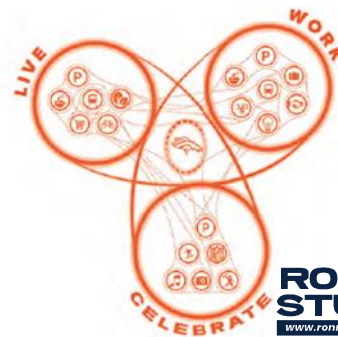
**RONNY**  
**STUDIO**  
[www.ronny-studio.com](http://www.ronny-studio.com)

**04**  
CELEBRATING HISTORY AND CULTURE IN AUTHENTIC WAYS



**RONNY RONNY**  
**STUDIO STUDIO**  
[www.ronny-studio.com](http://www.ronny-studio.com) [www.ronny-studio.com](http://www.ronny-studio.com)

**05**  
A WORLD CLASS FAN EXPERIENCE



**RONNY RONNY**  
**STUDIO STUDIO**  
[www.ronny-studio.com](http://www.ronny-studio.com) [www.ronny-studio.com](http://www.ronny-studio.com)

**06**  
A REGIONAL DESTINATION GROUNDED IN ITS LOCALE



**RONNY**  
**STUDIO**  
[www.ronny-studio.com](http://www.ronny-studio.com)

**RONNY**  
**STUDIO 0%**

**RONNY**  
**STUDIO 0%**

# PLANNING PROCESS

**2025**      **2026**                      **2027**                      **2028**                      **2029**                      **2030**                      **2031**  
Q3   Q4   Q1   Q2   Q3   Q4   Q1   Q2   Q3   Q4   Q1   Q2   Q3   Q4   Q1   Q2   Q3   Q4   Q1   Q2   Q3   Q4   Q1   Q2   Q3  
AUG SEP   OCT NOV DEC   JAN FEB MAR   APR MAY JUN   JUL AUG SEP   OCT NOV DEC   JAN FEB MAR   APR MAY JUN   JUL AUG SEP   OCT NOV DEC   JAN FEB MAR   APR MAY JUN   JUL AUG SEP   OCT NOV DEC   JAN FEB MAR   APR MAY JUN   JUL AUG SEP

## COMMUNICATIONS + ENGAGEMENT

**WE ARE HERE**

## ENTITLEMENTS + DESIGN

## COMMUNITY BENEFITS AGREEMENT

## CONSTRUCTION



**DOWNTOWN**

**DENVER  
WATER**

**BURNHAM  
YARD**

**LA ALMA  
LINCOLN PARK**

**LOCOMOTIVE  
SHOP**

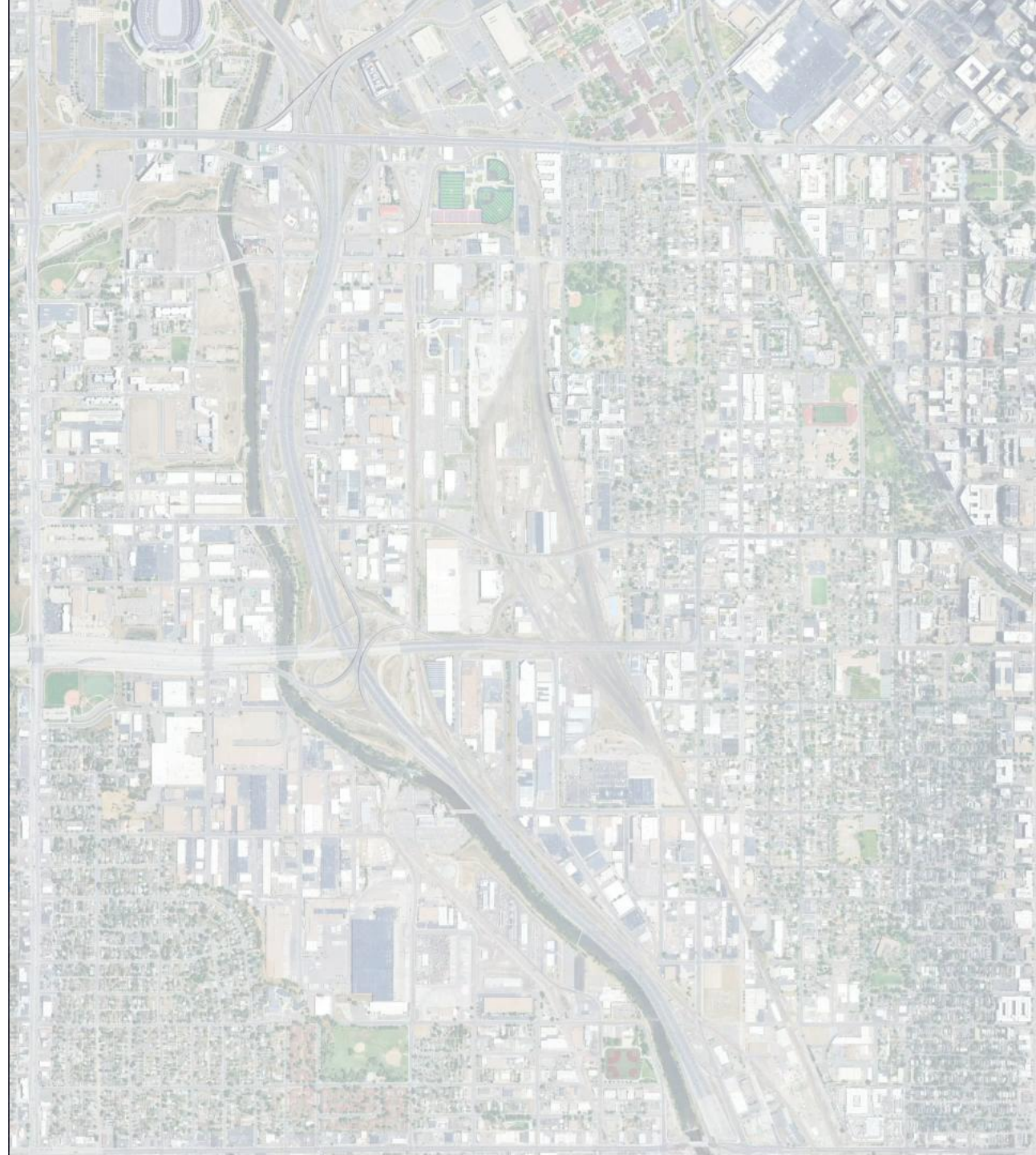
**RONNY  
STUDIO** <sup>TH</sup> **AVE  
VIADUCT**

**TURNTABLE**

# ALIGNING PLANNING ACROSS MULTIPLE SCALES

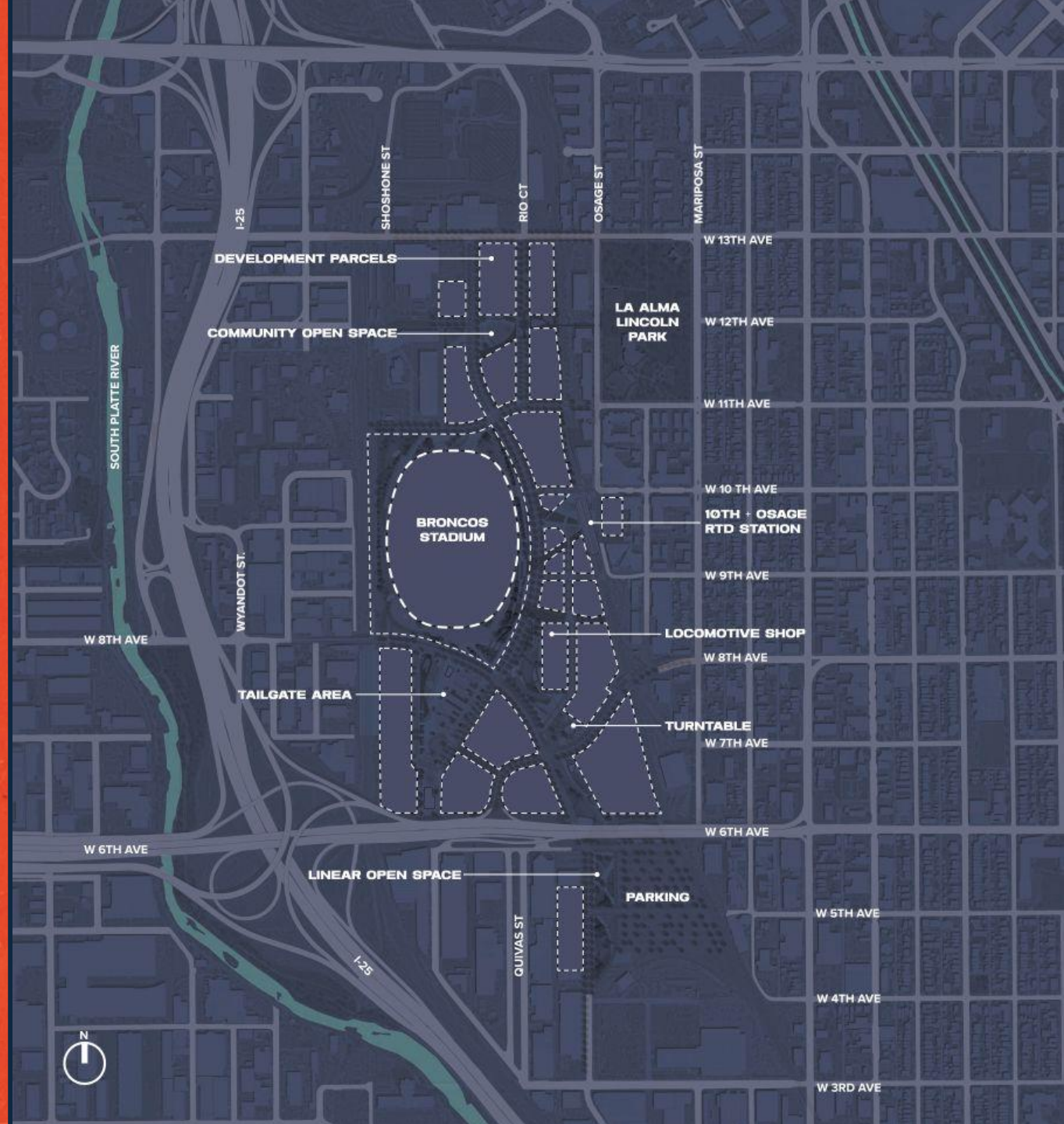
## The Coordinated Efforts

The Broncos, City of Denver and the Denver Urban Renewal Authority are conducting three separate planning studies for the area. These efforts are coordinated to ensure that the plans for Burnham Yard and the broader area are aligned and inform one another.



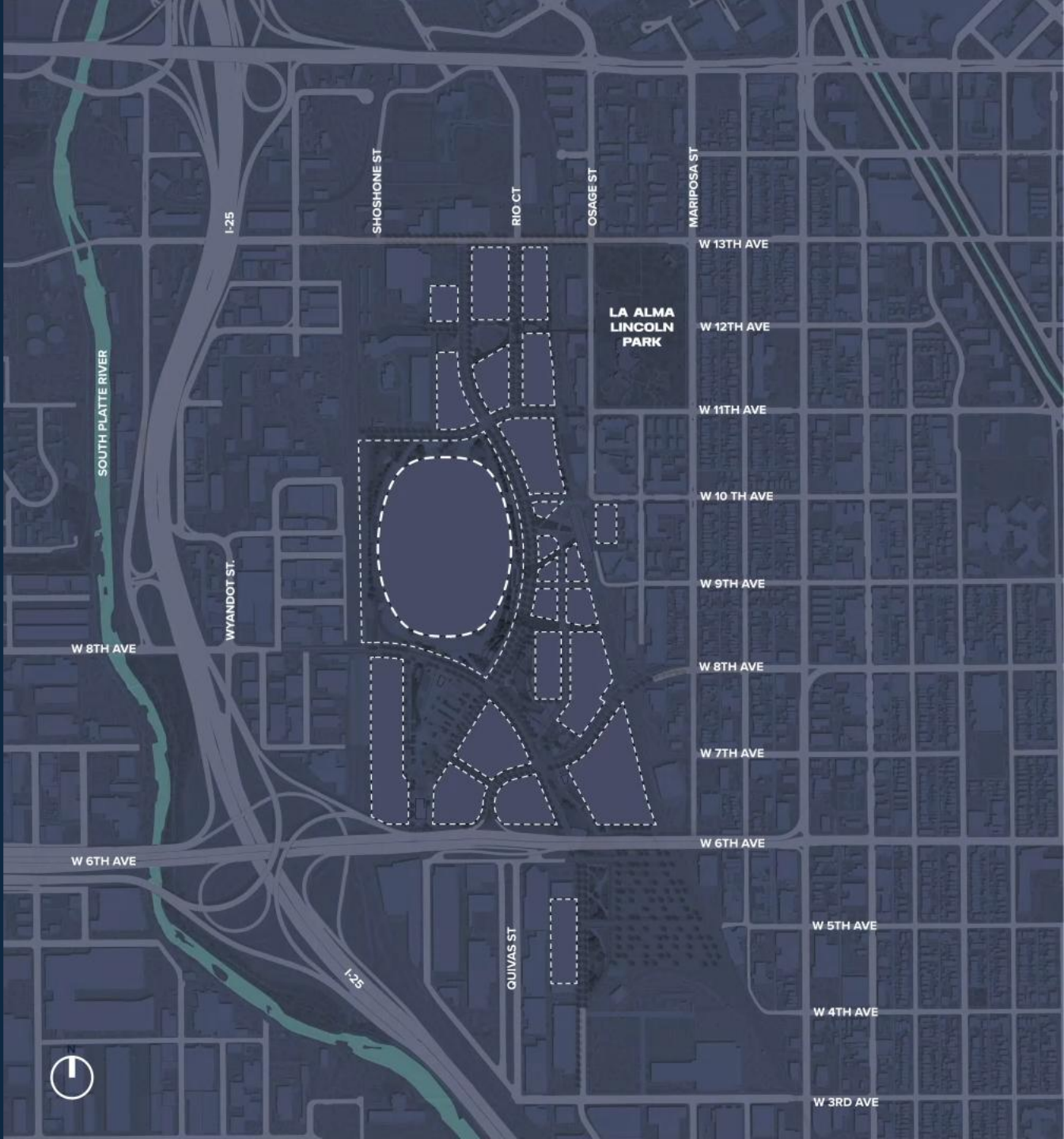
# MASTER PLAN APPROACH

The plan for Burnham Yard is to develop an extension of the City integrated into the shared memory of the community.



# MASTER PLAN MOVES

1. Place stadium to reduce visual impact on adjacent community



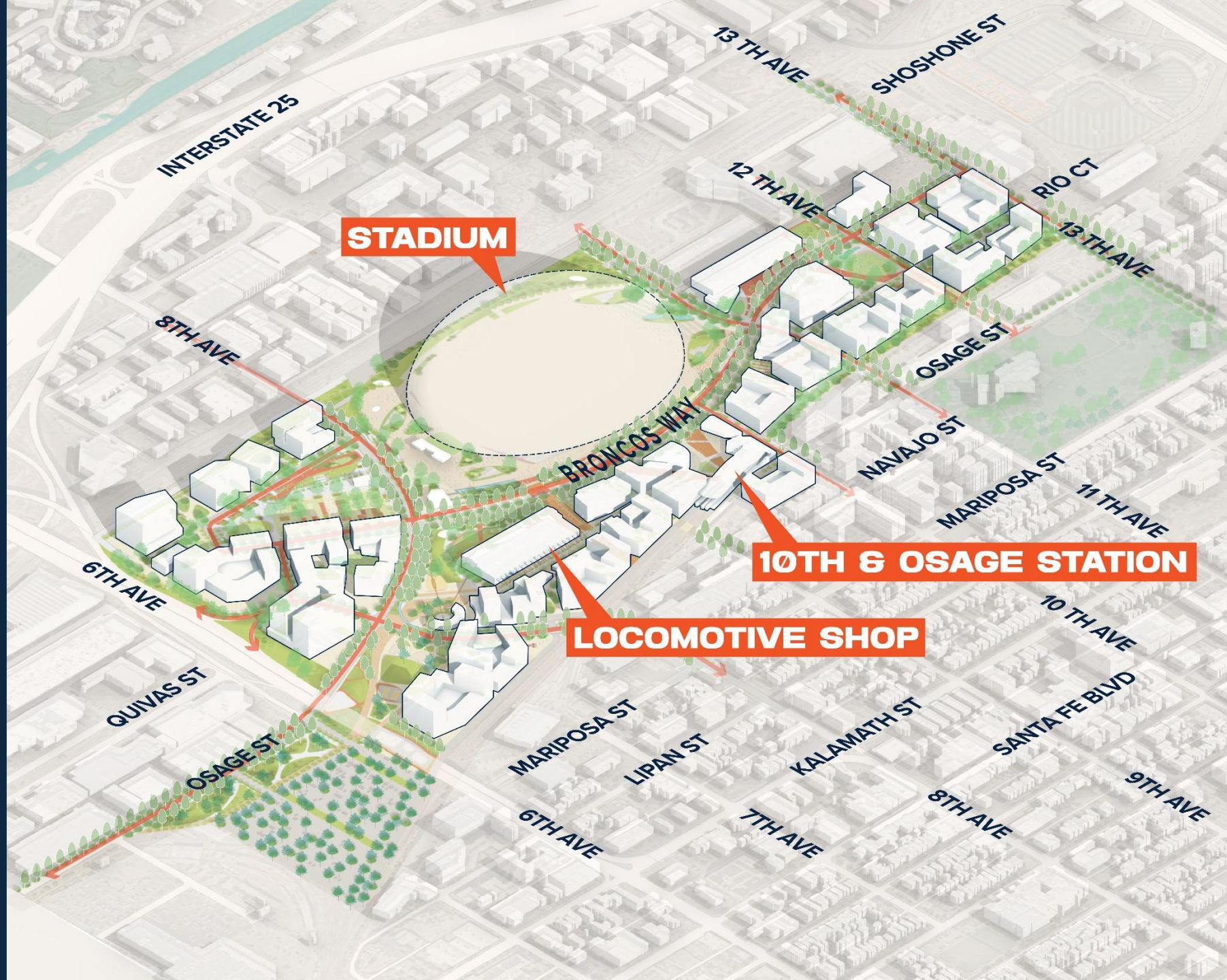
# DISTRICT DENSITY

## Balancing Density and Height with Program and Use

Burnham Yard is anticipated to include 5 to 7 million square feet of mixed-use development, excluding the stadium.

Use on site will include:

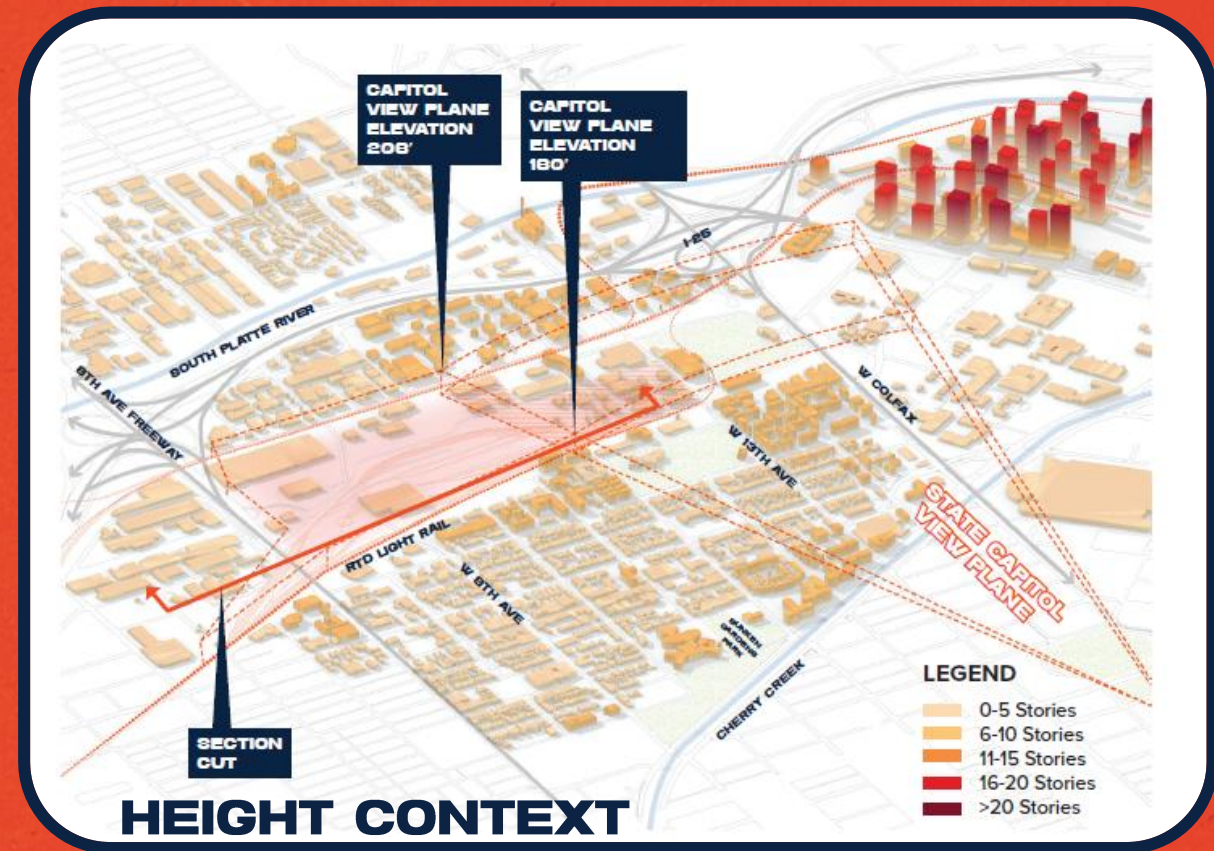
- Residential
- Retail
- Entertainment
- Office
- Civic
- Hospitality
- Daily Life Amenities
- And more!



# RESPECTING VIEWS + NEIGHBORHOOD CONTEXT

## Creating a Context Sensitive Development

Building heights are moderated along the eastern edge to transition to the residential character of La Alma Lincoln Park and the Santa Fe Arts District. Within the Entertainment District, development is called relative to the historic Locomotive Shop. Taller buildings are concentrated to the north and south to preserve view corridors.



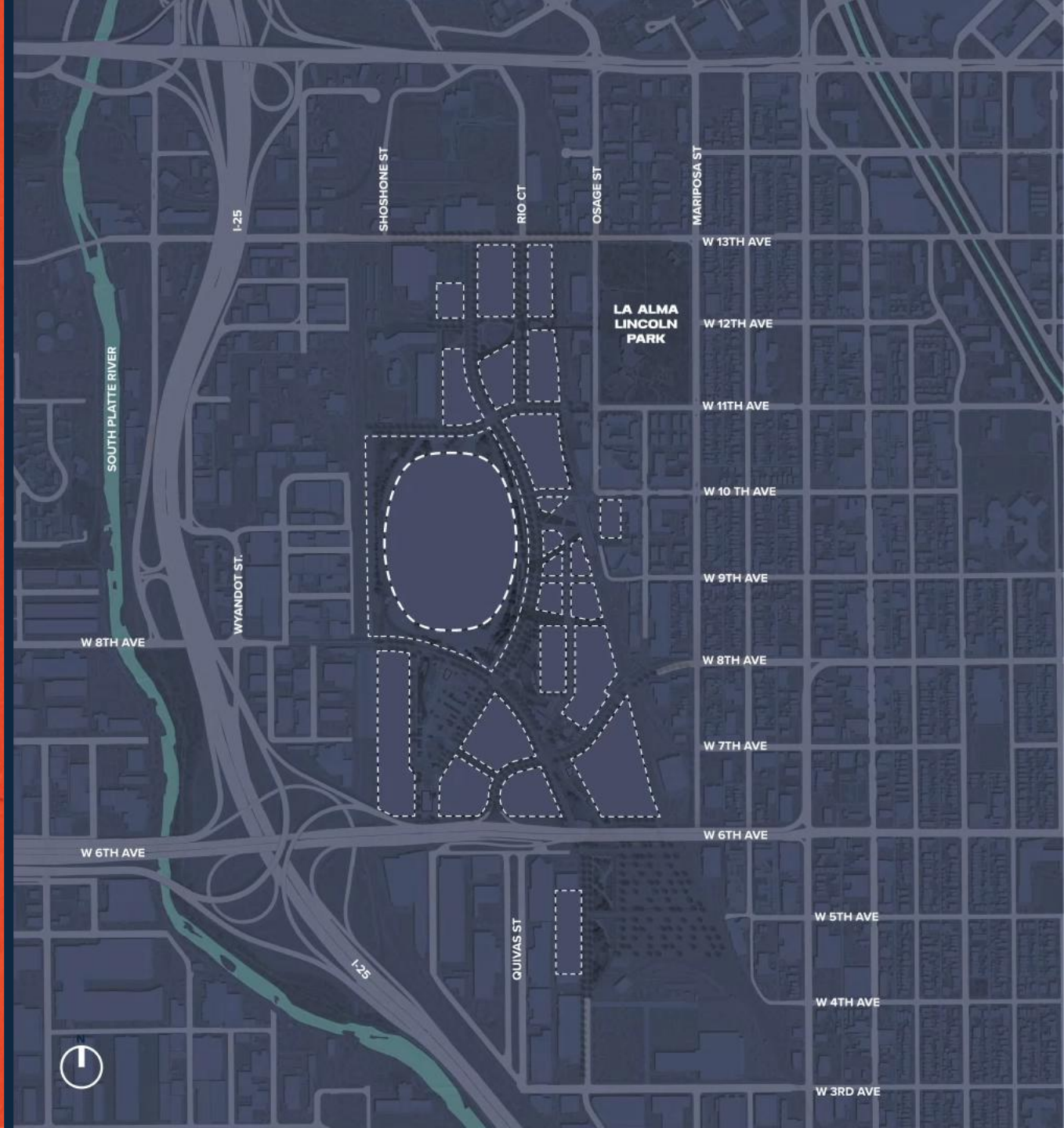
## CONCEPTUAL BUILDING HEIGHTS

# MASTER PLAN MOVES

1. Place stadium to reduce visual impact on adjacent community

2. Extend the city grid into Burnham Yard

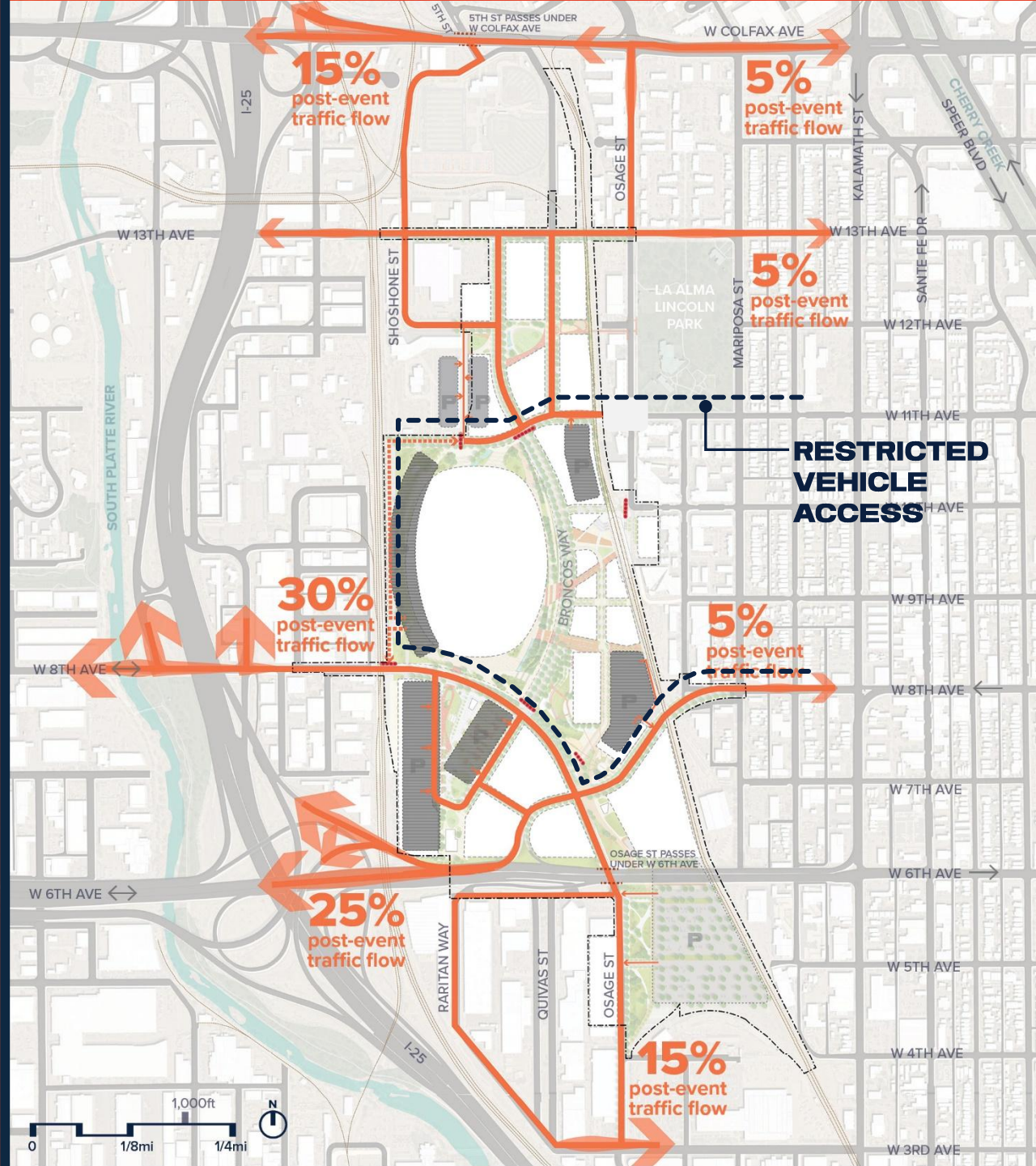
Integrating district streets with establish streets and routes for ample access for game-day and every-day amenities



# EVENT DAY TRAFFIC PATTERNS

## Pre & Post Event Considerations

- Move People Quickly + Safely to Major Highways
- Provide Sufficient Parking + Connect to Existing Offsite Reservoirs
- Prevent Inundating Neighborhood with Traffic

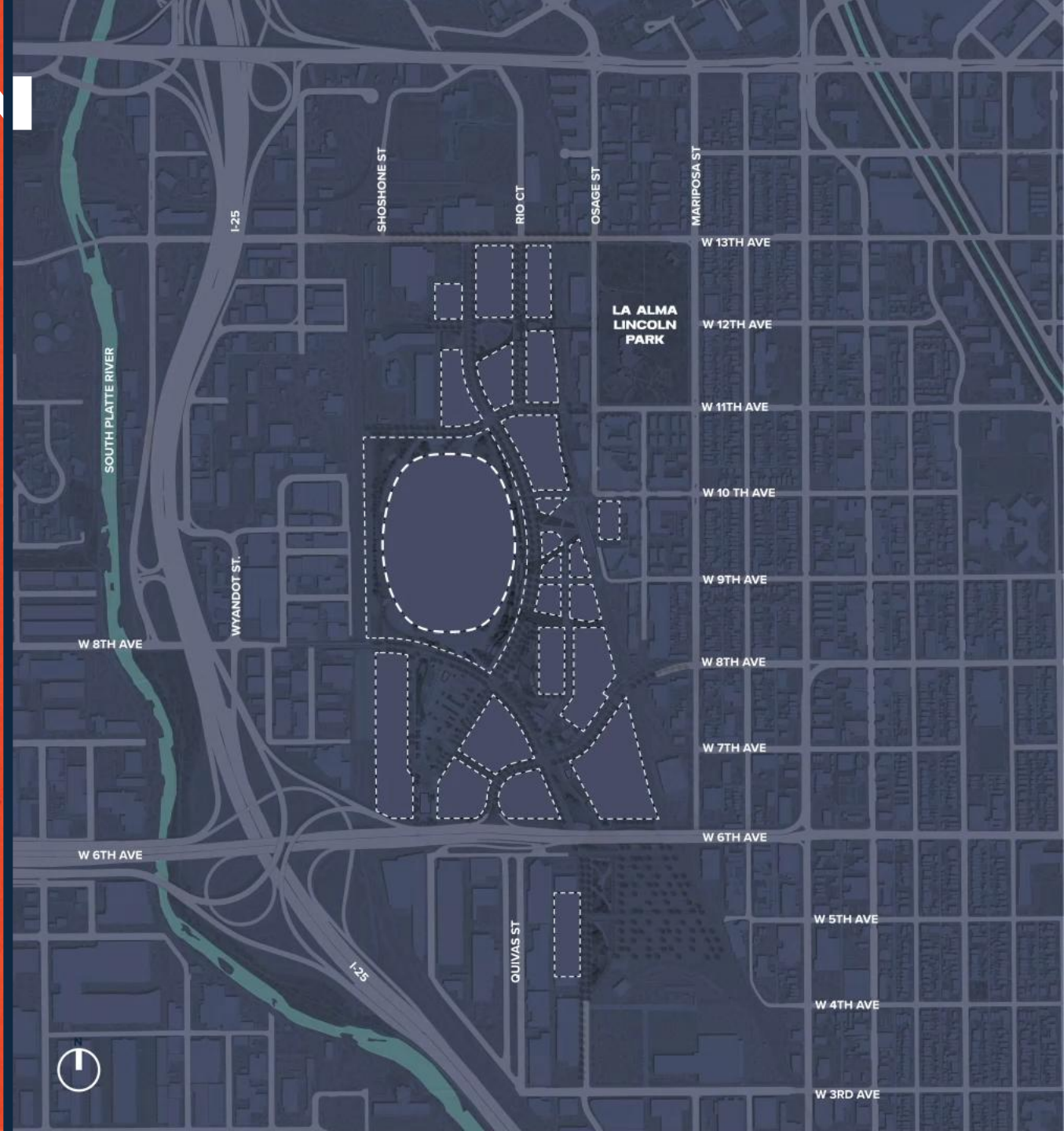


# BIKE + PEDESTRIAN CIRCULATION

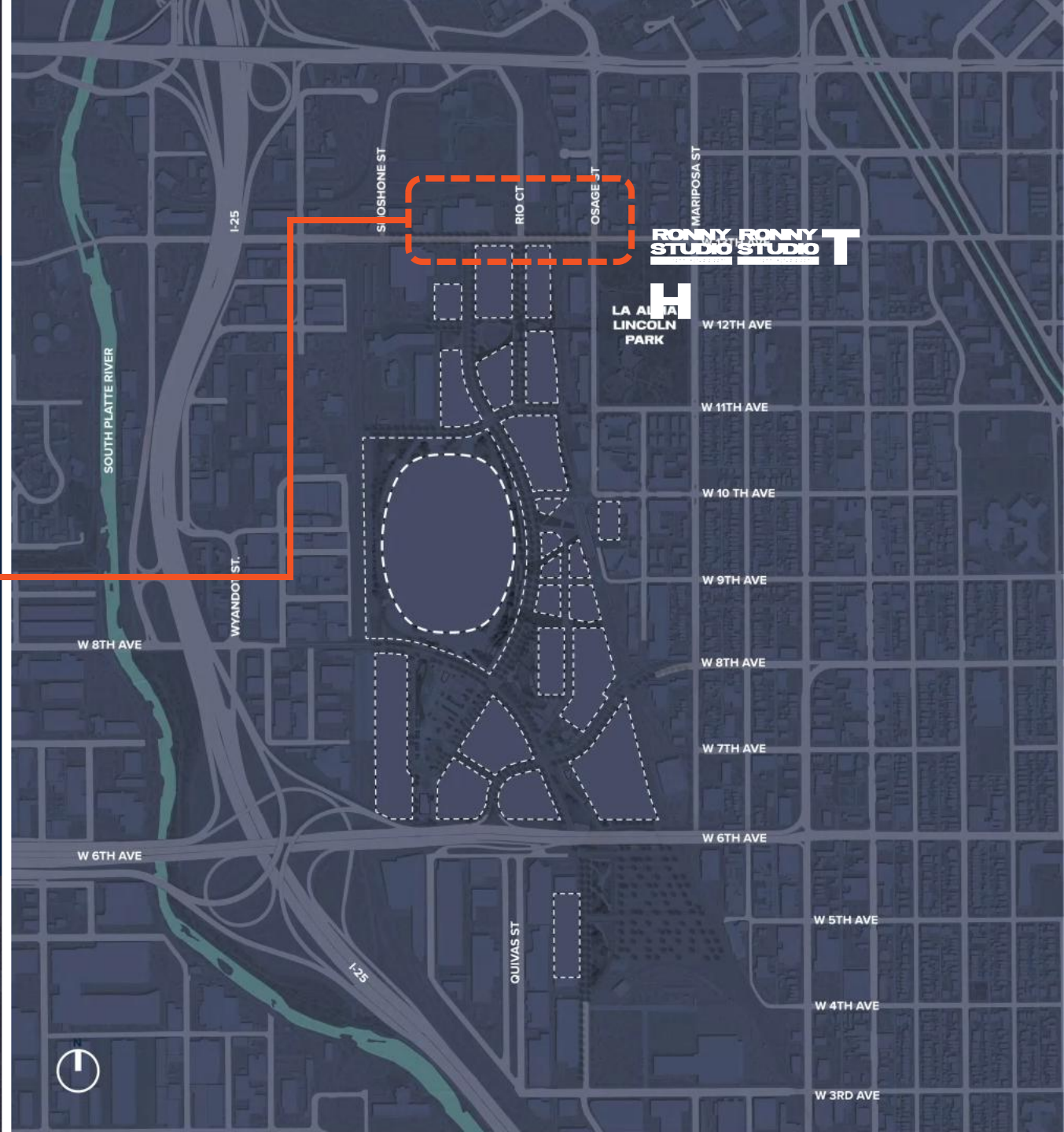
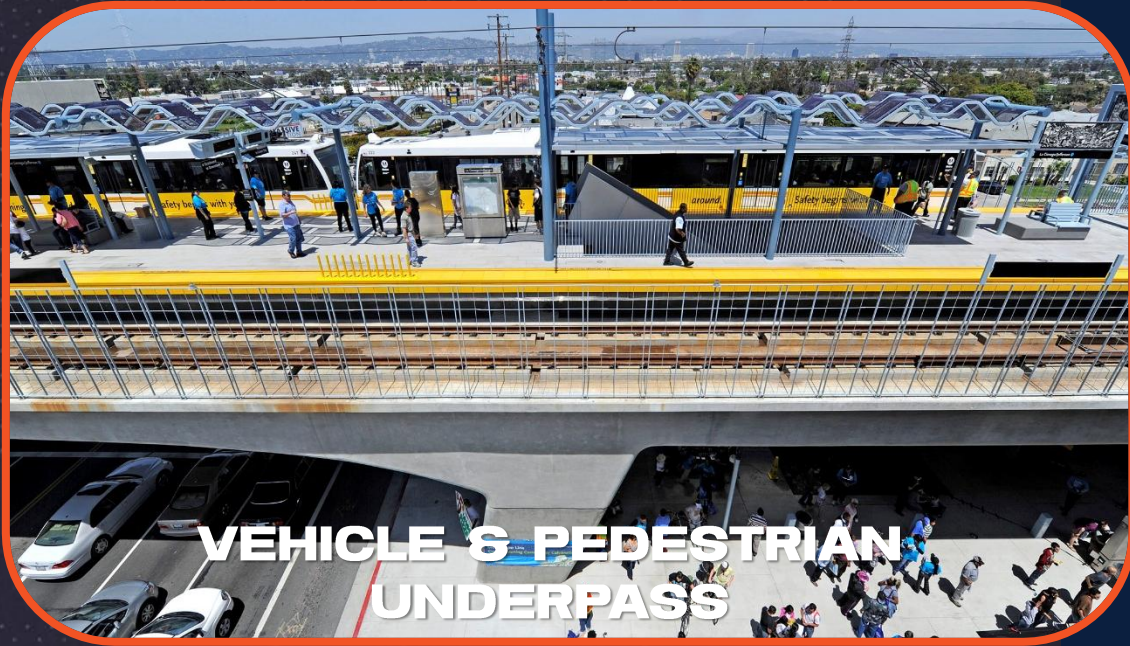
## Connecting to Planned and Existing Bike and Pedestrian Facilities

Burnham Yard is envisioned to be a walkable and bikeable district, connecting to the existing bike and pedestrian network. This will be:

- Safe
- Convenient
- Visual Appealing



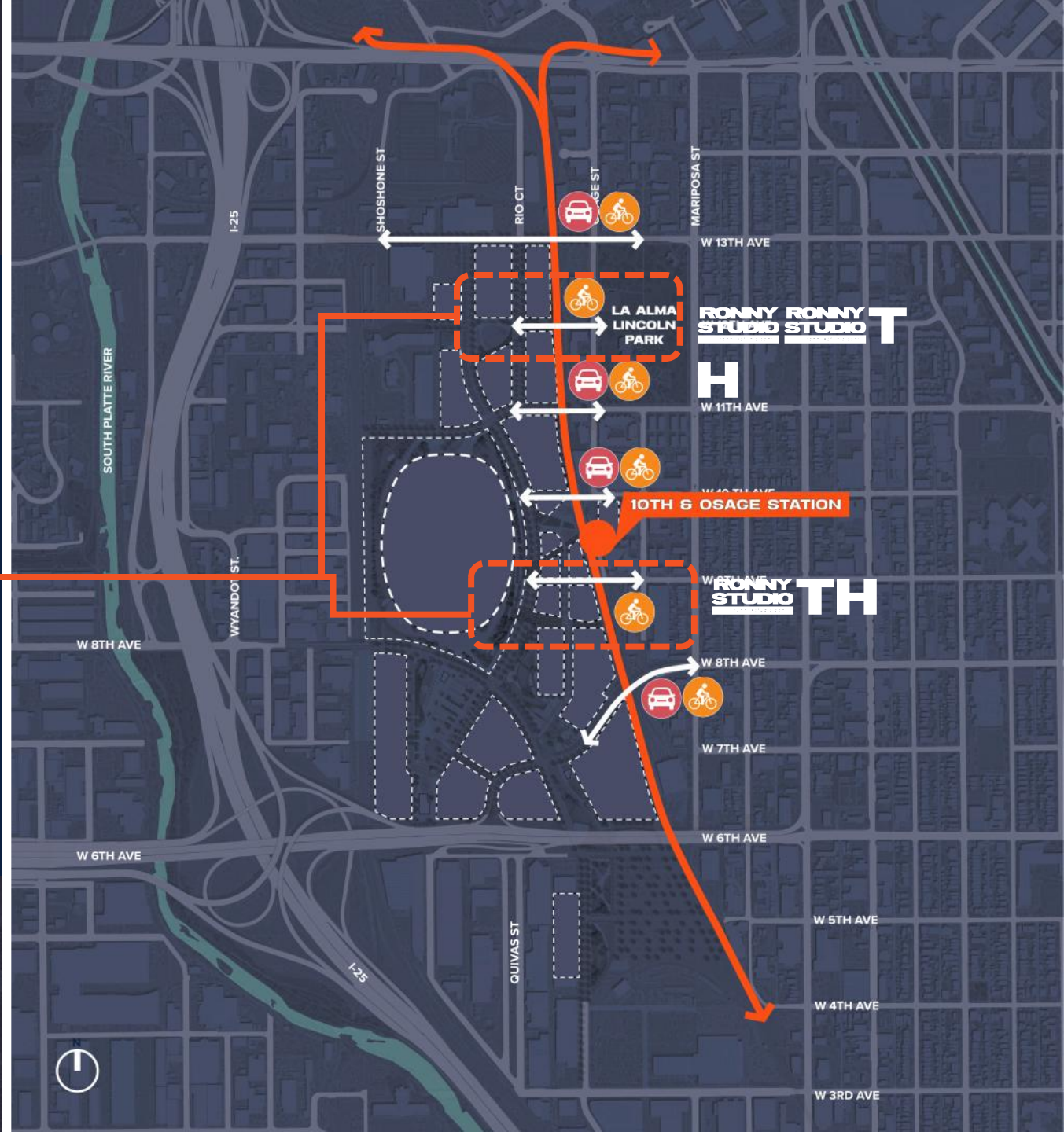
# EAST EDGE INTERFACE



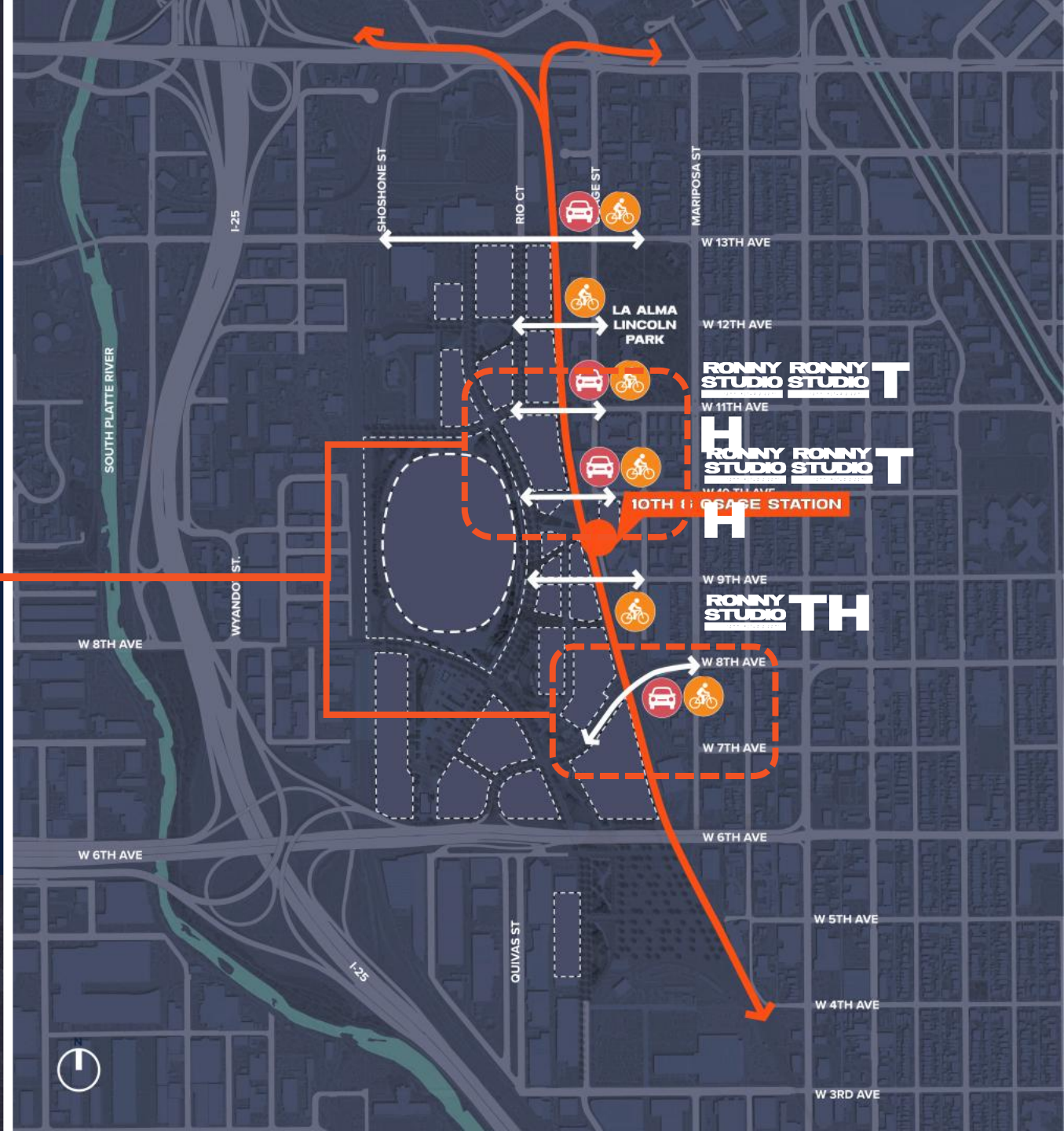
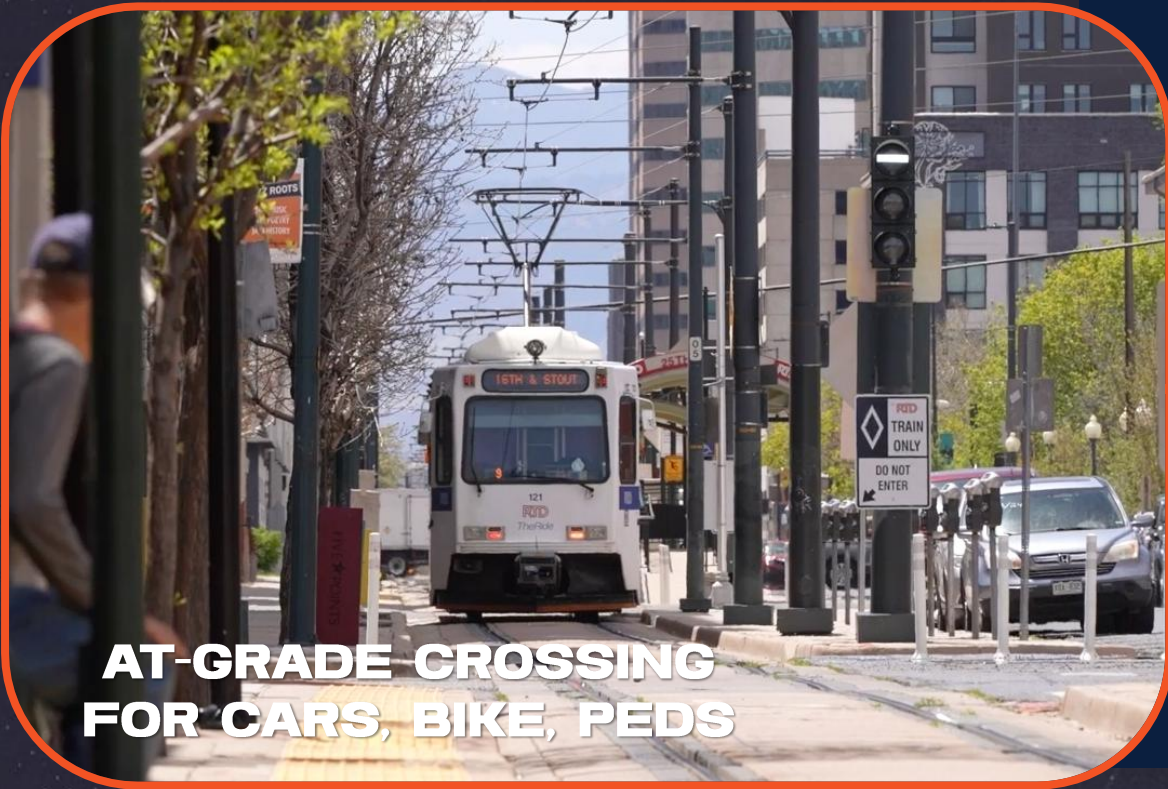
# EAST EDGE INTERFACE



**PEDESTRIAN + BIKE  
UNDERPASS**

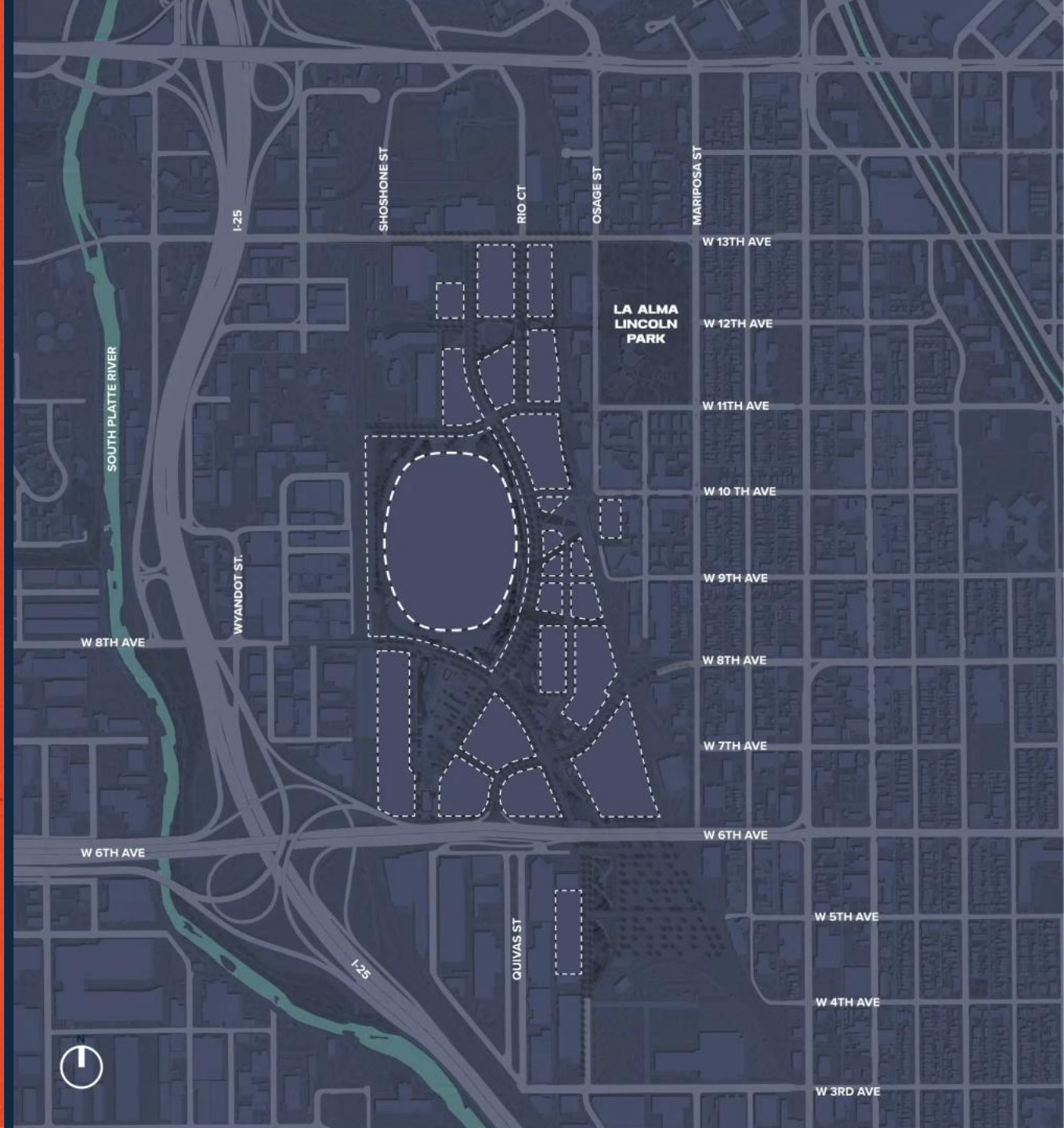


# EAST EDGE INTERFACE



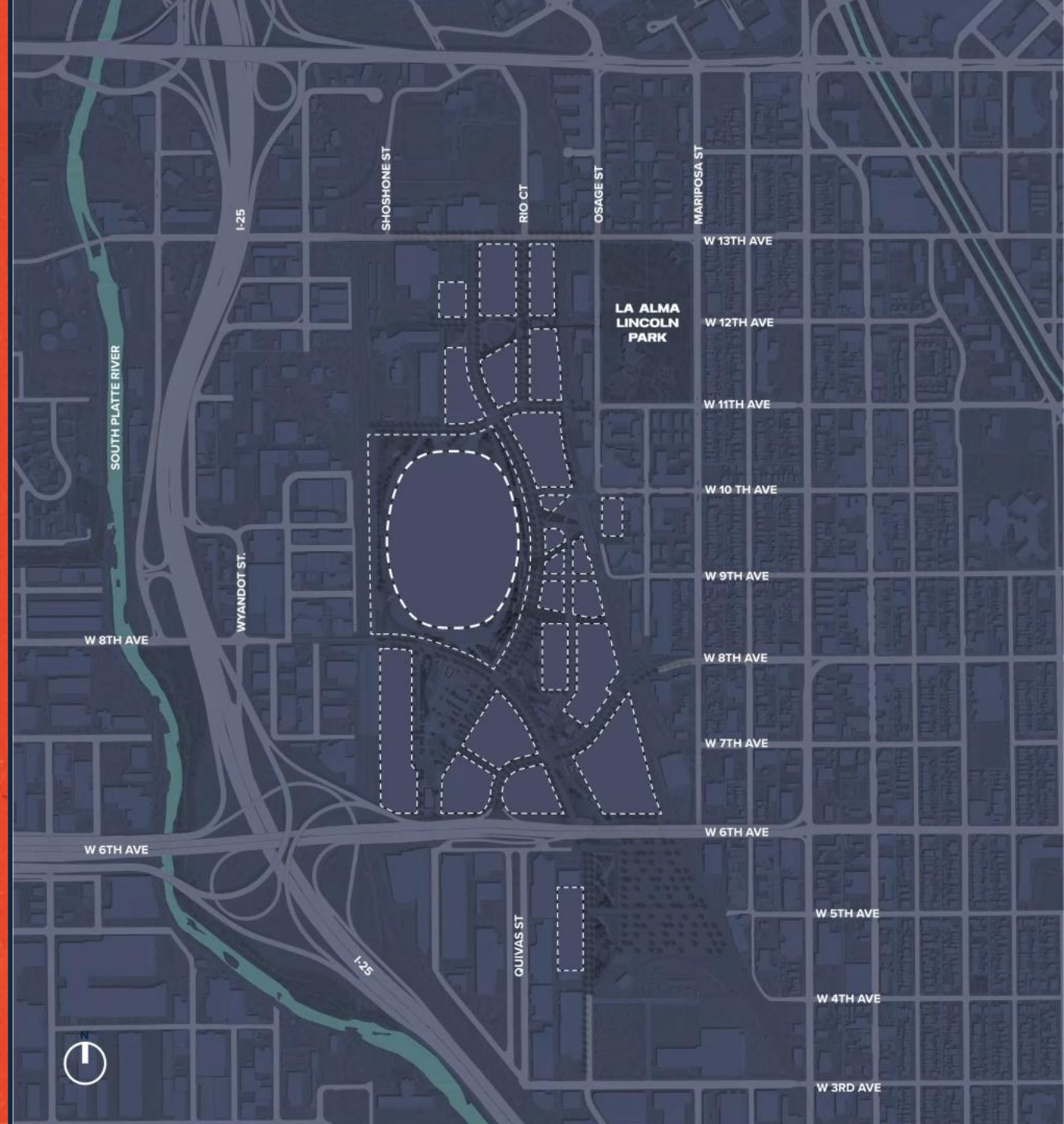
# MASTER PLAN MOVES

1. Place stadium to reduce visual impact on adjacent community
2. Extend the city grid into Burnham Yard
3. Develop unique zones within Burnham Yard



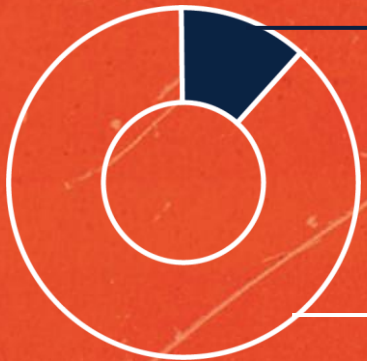
# MASTER PLAN MOVES

1. Place stadium to reduce visual impact on adjacent community
2. Extend the city grid into Burnham Yard
3. Develop unique neighborhoods within Burnham Yard
4. Connect the existing Locomotive Shop and Stadium to the Neighborhood via 10<sup>th</sup> Street



# MASTER PLAN MOVES

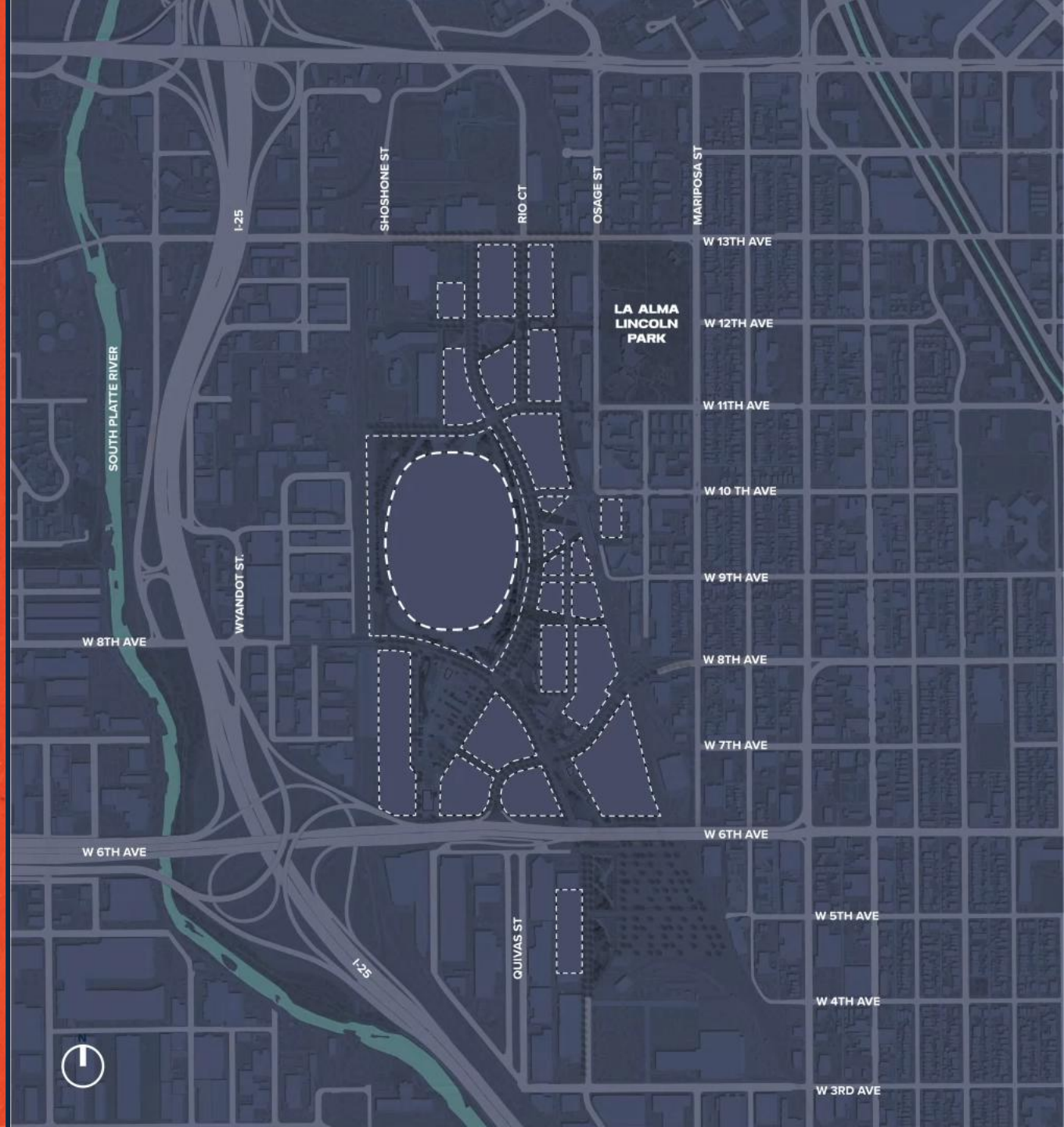
1. Place stadium to reduce visual impact on adjacent community
2. Extend the city grid into Burnham Yard
3. Develop unique zones within Burnham Yard
4. Connect the existing Locomotive Shop and Stadium to the Neighborhood via 10th Street
5. Connect Burnham Yards with a system of open spaces



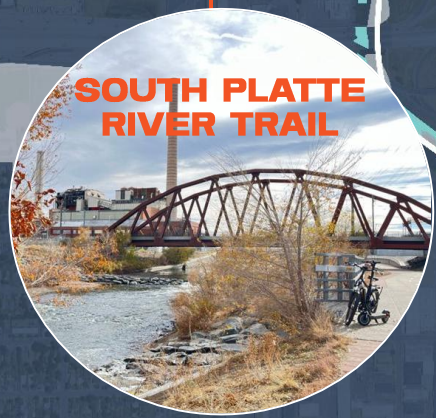
>15 Acres Public Space

150 Acres

Providing open space for public amenities, community, and integration of nature.



# COMPLEMENTING SURROUNDING OPEN SPACE



RONNY STUDIO  
RONNY STUDIO

AVE

SOUTH PLATTE

RONNY STUDIO

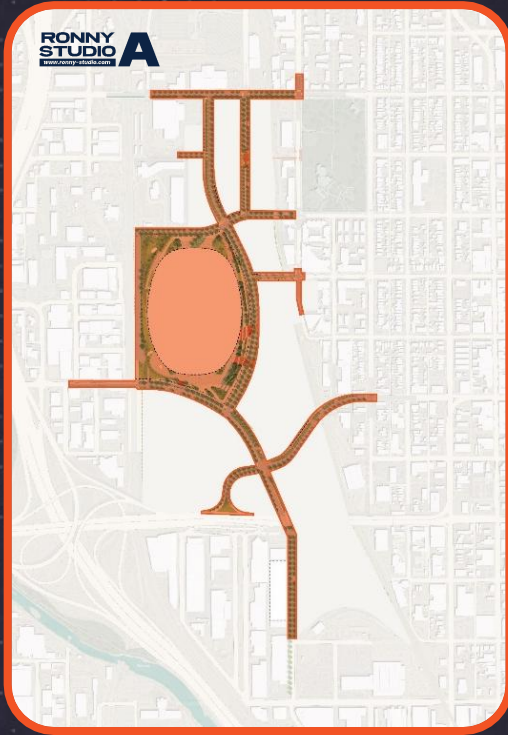
AVE

CHERRY CREEK

# PRELIMINARY PHASING IDEAS

PHASE **RONNY STUDIO**  
RONNY RONNY RONNY RONNY  
STUDIO STUDIO STUDIO STUDIO

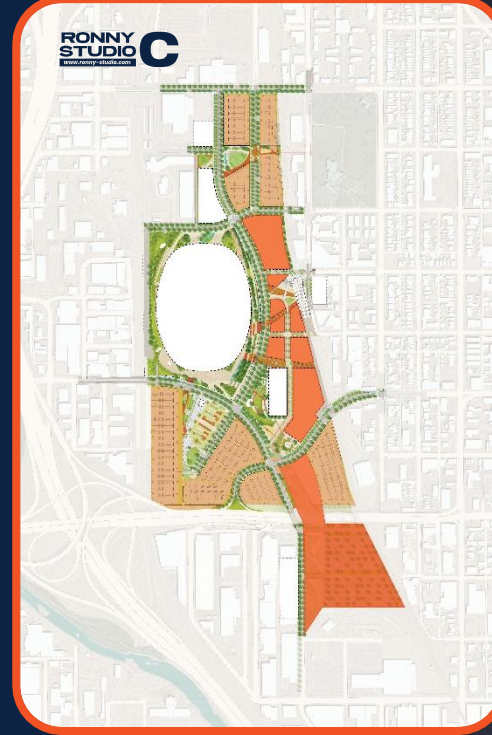
## FUTURE PHASES



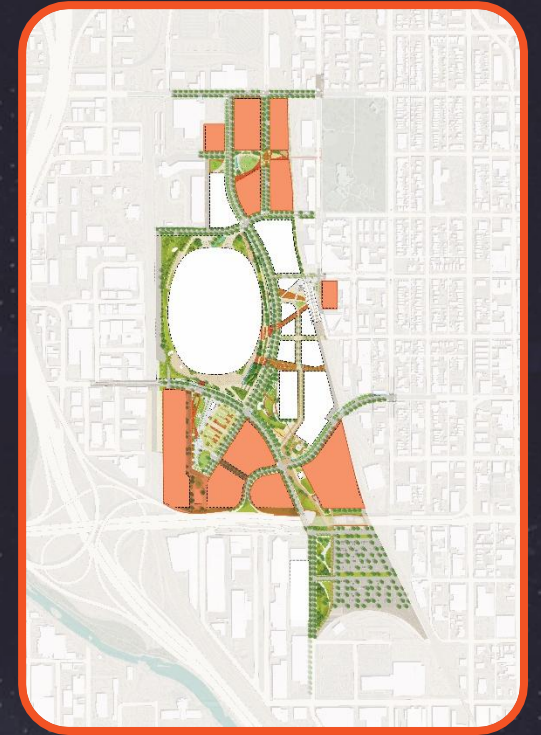
- Site demolition and preparation
- Enabling infrastructure
- Primary streets
- New Broncos Stadium



- District infrastructure
- Open space
- Parking structures
- Locomotive Shop



- Entertainment district buildings
- Temporary surface parking



- Open spaces
- Mixed use buildings in Northern and Southern Districts

# A WORLD CLASS PLACE FOR THE EVERYDAY AND THE BIG DAY



# WE WANT TO HEAR FROM YOU!

Stay up-to-date with the latest information and provide additional feedback at

<https://newstadium.denverbroncos.com/>

## Outreach Summary to Date

- 2 Public Open Houses
- 9 Stakeholder Conversations
- 13 Non-Profit Meetings
- 36 Elected Official Meetings

## Future Outreach to Come

- Additional Public Open Houses
- CBA Discussions



# SHARE YOUR FEEDBACK

Tell us what you  
think tonight!  
Scan this QR Code:



# WE WANT TO HEAR FROM YOU!

Stay up-to-date with the latest information and provide additional feedback at

<https://newstadium.denverbroncos.com/>

## Four Q&A Sessions

- Project Overview
- Built Form & Character
- Mobility & Access
- Open Space

## Public Comment Station

- Share additional thoughts

